



**PERFORM
WITH
PRECISION**

**FORMWORK
ACCESSORIES:
FORM LINERS
CONCRETE
CONSTRUCTION
SOLUTIONS**





INNOVATION CENTER

REAL-WORLD SOLUTIONS INSPIRED BY YOUR VISION

Your vision is to take concrete construction to new heights. We turn that vision into real-world solutions through precision research and development, testing and technology.

Together we are redefining what is possible in the concrete construction industry. Our Innovation Center is comprised of:

- **A state of the art chemical lab**
- **A full-featured mechanical test facility**
- **Product demonstration areas**
- **Contemporary training and meeting areas**

Bring us your ideas and we will deliver your solution.



Perform with Precision™



800-876-4857



From standard patterns to unique designs, our formliners provide cost-effective and attractive architectural details to any concrete construction project. Formliner materials to match your budget and job requirements.

FORMLINERS

Block patterns.....	4
Brick Patterns	5
Smooth Flute Patterns.....	6-7
Fractured Patterns	8
Stone Patterns.....	9-11
Wood Patterns.....	12
Other Patterns	13
Custom Patterns.....	14



800-876-4857 formtechinc.com

Block Patterns

8" X 8" ROCK FACE BLOCK

Product Code	Description	Standard Sheet Size	Weight
F70330	0.090 mil Styrene	10' x 4'	20.00 LB
F70270	0.110 mil ABS	10' x 4'	24.80 LB

8" X 16" ROCK FACE BLOCK

Product Code	Description	Standard Sheet Size	Weight
F70331	0.090 mil Styrene	9'-4" x 4'	20.00 LB
F70271	0.110 mil ABS	9'-4" x 4'	24.80 LB

8" X 16" ROCK FACE STACKED BOND

Product Code	Description	Standard Sheet Size	Weight
F70332	0.090 mil Styrene	9'-4" x 4'	20.00 LB
F70272	0.110 mil ABS	9'-4" x 4'	24.80 LB

8" X 16" SMOOTH FACE BLOCK

Product Code	Description	Standard Sheet Size	Weight
F70333	0.090 mil Styrene	9'-4" x 4'	20.00 LB
F70273	0.110 mil ABS	9'-4" x 4'	24.80 LB

12" X 12" ROCK FACE BLOCK

Product Code	Description	Standard Sheet Size	Weight
F947042	0.090 mil Styrene	10' x 4'	20.00 LB
F940011	0.110 mil ABS	10' x 4'	24.80 LB

16" X 16" ROCK FACE BLOCK

Product Code	Description	Standard Sheet Size	Weight
F70607	0.090 mil Styrene	9'-4" x 4'	20.00 LB
F70635	0.110 mil ABS	9'-4" x 4'	24.80 LB

48" X 16" ROCK FACE BLOCK

Product Code	Description	Standard Sheet Size	Weight
F70608	0.090 mil Styrene	10' x 4'	20.00 LB
F70636	0.110 mil ABS	10' x 4'	24.80 LB

MASONRY SLUMP BLOCK

Product Code	Description	Standard Sheet Size	Weight
F30734	0.090 mil Styrene	10' x 4'	20.00 LB
F30426	0.110 mil ABS	10' x 4'	24.80 LB



Brick Patterns

3" X 8" SMOOTH BRICK (ROUND MORTAR)

Product Code	Description	Standard Sheet Size	Weight
F70598	0.070 mil Styrene	10' x 4' 15.20	LB
F70515	0.070 mil ABS	10' x 4'	16.00 LB

3" X 8" SMOOTH BRICK (SQUARE MORTAR)

Product Code	Description	Standard Sheet Size	Weight
F70327	0.070 mil Styrene	10' x 4'	15.20 LB
F70267	0.070 mil ABS	10' x 4'	16.00 LB

4" X 12" SMOOTH BRICK (OFF-CENTER SQUARE MORTAR)

Product Code	Description	Standard Sheet Size	Weight
F70329	0.090 mil Styrene	10' x 4'	20.00 LB
F70269	0.110 mil ABS	10' x 4'	24.80 LB

4" X 12" SMOOTH BRICK (ON-CENTER SQUARE MORTAR)

Product Code	Description	Standard Sheet Size	Weight
F70328	0.090 mil Styrene	10' x 4'	20.00 LB
F70268	0.110 mil ABS	10' x 4'	24.80 LB

AGGREGATE BRICK

Product Code	Description	Standard Sheet Size	Weight
F947039	0.090 mil Styrene	10' x 4'	20.00 LB
F940008	0.110 mil ABS	10' x 4'	24.80 LB

AUSTIN TEXTURED BRICK

Product Code	Description	Standard Sheet Size	Weight
F947038	0.090 mil Styrene	10' x 3' 9"	20.00 LB
F940007	0.110 mil ABS	10' x 3' 9"	24.80 LB

RUSTIC BRICK

Product Code	Description	Standard Sheet Size	Weight
F30723	0.070 mil Styrene	10' x 4'	15.20 LB
F30247	0.070 mil ABS	10' x 4'	16.00 LB

STRIATED BRICK

Product Code	Description	Standard Sheet Size	Weight
F30724	0.070 mil Styrene	10' x 4'	15.20 LB
F30222	0.070 mil ABS	10' x 4'	16.00 LB

WEATHERED BRICK

Product Code	Description	Standard Sheet Size	Weight
F70348	0.070 mil Styrene	10' x 4'	15.20 LB
F70349	0.070 mil ABS	10' x 4'	16.00 LB



Smooth Flute Patterns

1/4" DEEP RIB (5/8" OC)

Product Code	Description	Standard Sheet Size	Weight
F30708	0.070 mil Styrene (open end)	4' x 10'	15.20 LB
F30472	0.070 mil ABS (open end)	4' x 10'	16.00 LB

1/2" DEEP RIB (1-1/2" OC RIB)

Product Code	Description	Standard Sheet Size	Weight
F70322	0.090 mil Styrene (open end)	4' x 10'	20.00 LB
F70262	0.110 mil ABS (open end)	4' x 10'	24.80 LB

1/2" SINE WAVE (2" OC WAVE)

Product Code	Description	Standard Sheet Size	Weight
F947059	0.090 mil Styrene (open end)	4' x 10'	20.00 LB
F940028	0.110 mil ABS (open end)	4' x 10'	24.80 LB

3/4" DEEP RIB (1-1/2" OC RIB)

Product Code	Description	Standard Sheet Size	Weight
F70324	0.090 mil Styrene (open end)	4' x 10'	20.00 LB
F70264	0.110 mil ABS (open end)	4' x 10'	24.80 LB

3/4" DEEP RIB (2" OC RIB)

Product Code	Description	Standard Sheet Size	Weight
F70321	0.090 mil Styrene (open end)	4' x 10'	20.00 LB
F70261	0.110 mil ABS (open end)	4' x 10'	24.80 LB

3/4" DEEP RIB (2-1/2" OC RIB)

Product Code	Description	Standard Sheet Size	Weight
F947057	0.090 mil Styrene (open end)	4' x 10'	20.00 LB
F940026	0.110 mil ABS (open end)	4' x 10'	24.80 LB

3/4" DEEP RIB (3" OC RIB, 1-1/2" PEAK, 1" VALLEY)

Product Code	Description	Standard Sheet Size	Weight
F947050	0.090 mil Styrene (open end)	4' x 10'	20.00 LB
F940019	0.110 mil ABS (open end)	4' x 10'	24.80 LB



3/4" DEEP RIB (3" OC RIB, 1" PEAK, 1-1/2" VALLEY)

Product Code	Description	Standard Sheet Size	Weight
F3170388	0.090 mil Styrene (open end)	4' x 10'	20.00 LB
F3170352	0.110 mil ABS (open end)	4' x 10'	24.80 LB

3/4" DEEP RIB (4" OC RIB, 1-3/4" PEAK, 1-3/4" VALLEY)

Product Code	Description	Standard Sheet Size	Weight
F70326	0.090 mil Styrene (open end)	4' x 10'	20.00 LB
F70266	0.110 mil ABS (open end)	4' x 10'	24.80 LB

3/4" DEEP RIB (6" OC RIB, 2-1/2" PEAK, 2-1/2" VALLEY)

Product Code	Description	Standard Sheet Size	Weight
F70323	0.090 mil Styrene (open end)	4' x 10'	20.00 LB
F70263	0.110 mil ABS (open end)	4' x 10'	24.80 LB

3/4" DEEP RIB (6" OC RIB, 2-1/2" PEAK, 2" VALLEY)

Product Code	Description	Standard Sheet Size	Weight
F947045	0.090 mil Styrene (open end)	4' x 10'	20.00 LB
F940014	0.110 mil ABS (open end)	4' x 10'	24.80 LB

3/4" DEEP RIB (4" OC RIB, 1" PEAK, 2-1/2" VALLEY)

Product Code	Description	Standard Sheet Size	Weight
F70325	0.090 mil Styrene (open end)	4' x 10'	20.00 LB
F70265	0.110 mil ABS (open end)	4' x 10'	24.80 LB

FORMLINERS

1" DEEP RIB (2" OC RIB)

Product Code	Description	Standard Sheet Size	Weight
F947044	0.090 mil Styrene (open end)	4' x 10'	20.00 LB
F940013	0.110 mil ABS (open end)	4' x 10'	24.80 LB

1-1/2" DEEP RIB (4" OC RIB, 1" PEAK, 2-1/2" VALLEY)

Product Code	Description	Standard Sheet Size	Weight
F947040	0.150 mil Styrene (open end)	4' x 10'	34.00 LB
F940009	0.150 mil ABS (open end)	4' x 10'	34.00 LB

1-1/2" DEEP RIB (4" OC RIB, 1-1/2" PEAK, 1-1/2" VALLEY)

Product Code	Description	Standard Sheet Size	Weight
F70320	0.150 mil Styrene (open end)	4' x 10'	34.00 LB
F70260	0.150 mil ABS (open end)	4' x 10'	34.00 LB

1-1/2" DEEP RIB (6" OC RIB)

Product Code	Description	Standard Sheet Size	Weight
F947043	0.150 mil Styrene (open end)	4' x 10'	34.00 LB
F940012	0.150 mil ABS (open end)	4' x 10'	34.00 LB

1-1/2" DEEP RIB (7" OC RIB; 1-5/8" TOP AND 1-5/8" VALLEY; IL DOT)

Product Code	Description	Standard Sheet Size	Weight
F70606	0.150 mil Styrene (open end)	4' x 10'	34.00 LB
F70634	0.150 mil ABS (open end)	4' x 10'	34.00 LB

RANDOM VERTICAL RUSTICATION

Product Code	Description	Standard Sheet Size	Weight
F30728	0.150 mil Styrene (open end)	4' x 10'	34.00 LB
F30487	0.150 mil ABS (open end)	4' x 10'	34.00 LB

VARIABLE DEPTH RUSTICATION (1" MAX RELIEF)

Product Code	Description	Standard Sheet Size	Weight
F70605	0.090 mil Styrene (open end)	4' x 10'	20.00 LB
F70633	0.110 mil ABS (open end)	4' x 10'	24.80 LB



WORLDWIDE PRECISION AND PERFORMANCE

We are the industry leader in tactical logistics, utilizing advanced demand management tools to ensure product availability by region. We meet contractor needs through:

- Knowledgeable customer service advisors
- Order placement, scheduling and product support
- A global distributor network
- Strategically located, company-owned distribution facilities

We deliver your product when and where you need it: **888-977-9600**.



Perform with Precision™

Fractured Patterns

3/4" FRACTURED FIN (1-1/2" OC FIN)

Product Code	Description	Standard Sheet Size	Weight
F30717	0.090 mil Styrene	4' x 10'	20.00 LB
F30449	0.110 mil ABS	4' x 10'	24.80 LB

RE2 FRACTURED FIN (1-1/2" OC)

Product Code	Description	Standard Sheet Size	Weight
F70389	0.090 mil Styrene	4' x 10'	0.00 LB
F70353	0.110 mil ABS	4' x 10'	0.00 LB

1" FRACTURED FIN (2" OC FIN)

Product Code	Description	Standard Sheet Size	Weight
F3170580	0.090 mil Styrene	4' x 10'	20.00 LB
F3170505	0.110 mil ABS	4' x 10'	24.80 LB

1" FRACTURED FIN (2" OC FIN; MASS HWY)

Product Code	Description	Standard Sheet Size	Weight
F30720	0.090 mil Styrene	4' x 10'	20.00 LB
F30492	0.110 mil ABS	4' x 10'	24.80 LB

1" FRACTURED FIN (2.35" OC RIB)

Product Code	Description	Standard Sheet Size	Weight
F3170341	0.090 mil Styrene	4' x 10'	20.00 LB
F3170343	0.110 mil ABS	4' x 10'	24.80 LB

1" ROCK FACE RIB (4" OC RIB; FLORIDA FLUTE)

Product Code	Description	Standard Sheet Size	Weight
F70601	0.090 mil Styrene	4' x 10'	0.00 LB
F70629	0.110 mil ABS	4' x 10'	24.80 LB

1-1/4" FRACTURED FIN (2" OC RIB)

Product Code	Description	Standard Sheet Size	Weight
F947047	0.090 mil Styrene	4' x 10'	20.00 LB
F940016	0.110 mil ABS	4' x 10'	24.80 LB

1-1/4" ROCK FACE RIB (4" OC RIB)

Product Code	Description	Standard Sheet Size	Weight
F70602	0.150 mil Styrene	4' x 10'	0.00 LB
F70630	0.150 mil ABS	4' x 10'	34.00 LB

1-1/2" AGGREGATE RIB (4-5/8" OC RIB)

Product Code	Description	Standard Sheet Size	Weight
F947041	0.150 mil Styrene	4' x 10'	34.00 LB
F940010	0.150 mil ABS	4' x 10'	34.00 LB

1-1/2" FRACTURED FIN (2" OC FIN)

Product Code	Description	Standard Sheet Size	Weight
F947061	0.150 mil Styrene	4' x 10'	34.00 LB
F940030	0.150 mil ABS	4' x 10'	34.00 LB

1-1/2" FRACTURED FIN (3" OC FIN)

Product Code	Description	Standard Sheet Size	Weight
F3170581	0.150 mil Styrene	4' x 10'	34.00 LB
F3170506	0.150 mil ABS	4' x 10'	34.00 LB

1-3/4" FRACTURED FIN (3" OC FIN)

Product Code	Description	Standard Sheet Size	Weight
F30718	0.150 mil Styrene	4' x 10'	20.00 LB
F30499	0.150 mil ABS	4' x 10'	34.00 LB

2" BROKEN ROCK RIB (3-7/16" OC RIB)

Product Code	Description	Standard Sheet Size	Weight
F30719	0.150 mil Styrene	4' x 10'	34.00 LB
F30451	0.150 mil ABS	4' x 10'	34.00 LB

FINE STONE RIB (2" OC RIB)

Product Code	Description	Standard Sheet Size	Weight
F30716	0.090 mil Styrene	4' x 10'	20.00 LB
F30448	0.110 mil ABS	4' x 10'	24.80 LB

FLUTED FRACTURED FIN (1-1/4" OC RIB)

Product Code	Description	Standard Sheet Size	Weight
F30732	0.090 mil Styrene	4' x 10'	20.00 LB
F30431	0.110 mil ABS	4' x 10'	24.80 LB

FRACTURED ROPE RIB (2" OC ROPE)

Product Code	Description	Standard Sheet Size	Weight
F30715	0.090 mil Styrene	4' x 10'	20.00 LB
F30475	0.110 mil ABS	4' x 10'	24.80 LB



Stone Patterns

1/2" - 3/4" CRUSHED STONE

Product Code	Description	Standard Sheet Size	Weight
F70667	0.070 mil Styrene	4' x 10'	0.00 LB
F70666	0.070 mil ABS	4' x 10'	0.00 LB

12" COURSING ASHLAR STONE

Product Code	Description	Standard Sheet Size	Weight
F70390	0.150 mil Styrene	10' X 4'	0.00 LB
F70354	0.150 mil ABS	10' X 4'	0.00 LB

AGED ASHLAR STONE

Product Code	Description	Standard Sheet Size	Weight
F70621	0.090 mil Styrene	10' x 4'	20.00 LB
F70649	0.110 mil ABS	10' x 4'	24.80 LB

AUSTIN ASHLAR STONE

Product Code	Description	Standard Sheet Size	Weight
F70613	0.150 mil Styrene	10' x 4'	34.00 LB
F70641	0.150 mil ABS	10' x 4'	34.00 LB

BUFFALO DRY STACK

Product Code	Description	Standard Sheet Size	Weight
F947056	0.090 mil Styrene	10' x 4'	20.00 LB
F940025	0.110 mil ABS	10' x 4'	24.80 LB

CHISELED ASHLAR STONE

Product Code	Description	Standard Sheet Size	Weight
F70617	0.150 mil Styrene	10' x 4'	34.00 LB
F70645	0.150 mil ABS	10' x 4'	34.00 LB

COLONIAL DRY STACK

Product Code	Description	Standard Sheet Size	Weight
F3170593	0.150 mil Styrene	10' x 4'	34.00 LB
F3170510	0.150 mil ABS	10' x 4'	34.00 LB

FRACTURED CONCRETE

Product Code	Description	Standard Sheet Size	Weight
F3170583	0.090 mil Styrene	4' x 10'	20.00 LB
F3170508	0.110 mil ABS	4' x 10'	24.80 LB

FRACTURED GRANITE

Product Code	Description	Standard Sheet Size	Weight
F947053	0.090 mil Styrene	4' x 10'	20.00 LB

Product Code	Description	Standard Sheet Size	Weight
F940022	0.110 mil ABS	4' x 10'	24.80 LB

GRANDE FLAGSTONE

Product Code	Description	Standard Sheet Size	Weight
F70612	0.090 mil Styrene	10' x 4'	20.00 LB
F70640	0.110 mil ABS	10' x 4'	24.80 LB

GRANITE STONE

Product Code	Description	Standard Sheet Size	Weight
F70623	0.090 mil Styrene	10' x 4'	20.00 LB
F70651	0.110 mil ABS	10' x 4'	24.80 LB

HILL COUNTRY FLAGSTONE

Product Code	Description	Standard Sheet Size	Weight
F3170594	0.150 mil Styrene	10' x 4'	34.00 LB
F3170511	0.150 mil ABS	10' x 4'	34.00 LB

LARGE DRY STACK STONE

Product Code	Description	Standard Sheet Size	Weight
F3170582	0.150 mil Styrene	10' x 4'	34.00 LB
F3170507	0.150 mil ABS	10' x 4'	34.00 LB

MISSION ASHLAR STONE

Product Code	Description	Standard Sheet Size	Weight
F70615	0.150 mil Styrene	10' x 4'	34.00 LB
F70643	0.150 mil ABS	10' x 4'	34.00 LB

OKLAHOMA NATIVE STONE

Product Code	Description	Standard Sheet Size	Weight
F947037	0.090 mil Styrene	10' x 4'	20.00 LB
F940006	0.110 mil ABS	10' x 4'	24.80 LB

OLD ASHLAR STONE

Product Code	Description	Standard Sheet Size	Weight
F30429	0.090 mil Styrene	10' x 4'	20.00 LB
F30427	0.110 mil ABS	10' x 4'	24.80 LB

PEA GRAVEL

Product Code	Description	Standard Sheet Size	Weight
F70609	0.070 mil Styrene	10' x 4'	15.20 LB
F70637	0.070 mil ABS	10' x 4'	16.00 LB

Stone Patterns, continued

PHOENIX LIMESTONE

Product Code	Description	Standard Sheet Size	Weight
F70658	0.090 mil Styrene	4' x 10'	20.00 LB
F70659	0.110 mil ABS	4' x 10'	24.80 LB

RANDOM FIELDSTONE LARGE

Product Code	Description	Standard Sheet Size	Weight
F70334	0.150 mil Styrene	10' x 4'	34.00 LB
F70274	0.150 mil ABS	10' x 4'	34.00 LB

ROUGH ASHLAR STONE

Product Code	Description	Standard Sheet Size	Weight
F70620	0.150 mil Styrene	10' x 4'	34.00 LB
F70648	0.150 mil ABS	10' x 4'	34.00 LB

ROUND STONE

Product Code	Description	Standard Sheet Size	Weight
F30722	0.070 mil Styrene	4' x 10'	15.20 LB
F30251	0.070 mil ABS	4' x 10'	16.00 LB

RUNNING BOND ASHLAR STONE

Product Code	Description	Standard Sheet Size	Weight
F70340	0.150 mil Styrene	9' x 4'	34.00 LB
F70342	0.150 mil ABS	9' x 4'	34.00 LB

SAN ANTONIO DRY STACK

Product Code	Description	Standard Sheet Size	Weight
F70619	0.090 mil Styrene	10' x 4'	20.00 LB
F70647	0.110 mil ABS	10' x 4'	24.80 LB

SEDONA STONE

Product Code	Description	Standard Sheet Size	Weight
F70618	0.150 mil Styrene	10' x 4'	34.00 LB
F70646	0.150 mil ABS	10' x 4'	34.00 LB

SHALLOW FIELDSTONE

Product Code	Description	Standard Sheet Size	Weight
F3170576	0.090 mil Styrene	10' x 4'	20.00 LB
F3170501	0.110 mil ABS	10' x 4'	24.80 LB

SMALL CRUSHED STONE

Product Code	Description	Standard Sheet Size	Weight
F30721	0.070 mil Styrene	4' x 10'	15.20 LB
F30250	0.070 mil ABS	4' x 10'	16.00 LB

SOUTHWEST ASHLAR STONE

Product Code	Description	Standard Sheet Size	Weight
F30430	0.150 mil Styrene	10' x 4'	34.00 LB
F30428	0.150 mil ABS	10' x 4'	34.00 LB

STANDARD DRY STACK

Product Code	Description	Standard Sheet Size	Weight
F3170578	0.150 mil Styrene	10' x 4'	34.00 LB
F3170503	0.150 mil ABS	10' x 4'	34.00 LB

TEXAS CHISELED LIMESTONE (9 FT 11 IN X 3 FT 7-1/2 IN SHEET)

Product Code	Description	Standard Sheet Size	Weight
F70616	0.150 mil Styrene	noted	34.00 LB
F70644	0.150 mil ABS	noted	34.00 LB

TEXAS FOSSILIZED LIMESTONE

Product Code	Description	Standard Sheet Size	Weight
F70610	0.070 mil Styrene	10' x 4'	15.20 LB
F70638	0.070 mil ABS	10' x 4'	16.00 LB

TRINITY ASHLAR STONE

Product Code	Description	Standard Sheet Size	Weight
F70614	0.150 mil Styrene	10' x 4'	34.00 LB
F70642	0.150 mil ABS	10' x 4'	34.00 LB

VERTICAL FLAGSTONE

Product Code	Description	Standard Sheet Size	Weight
F70599	0.090 mil Styrene	4' x 9'	20.00 LB
F70516	0.110 mil ABS	4' x 9'	24.80 LB

WEATHERED ROCK

Product Code	Description	Standard Sheet Size	Weight
F70624	0.150 mil Styrene	10' x 4'	34.00 LB
F70652	0.150 mil ABS	10' x 4'	34.00 LB



Custom Stone Formliner for Navy Pier Garage

The 1995 renovation of Navy Pier brought a children's museum, an amusement park, restaurants, shows and expos to the facility. It also brought crowds that quickly filled up the existing underground parking garage. To ease the parking problems, the City of Chicago decided to build a new multi-level above pier garage adding 700 parking spaces.

Included in the design of the building was consideration for sound-deadening properties. Because a concert stage is located near the garage, the parking structure surface was designed to shield residents in the nearby Lake Point Tower condominiums from unwanted noise.

After an accoustical engineer determined that a combination of rough and smooth textures in high relief would minimize the sound disturbance, the architectural firm then began inquiries with formliner manufacturers. Symons® by Dayton Superior was chosen because of superior experience with custom designs.

The first step in creating the formliner was chiseling the stones that would be used to crate the formliner mold. John Gast, the stone mason chosen for this project, chipped away at various sized stones to achieve the desired texture. After that, a set of master molds were created. In this case, molds ranging from 2'x2' to 3'x6' were made. Sizes that were used repeatedly had several molds made with slight variations to achieve a natural look in the finished concrete.

Job Superintendent Rich Phelan was concerned about creating an appropriate surface for the structure. He felt that "bugholes" and other concrete imperfections would interfere with the architect's intention to create a cut stone appearance. With vibration guidelines provided by Symons, he reports that "the result looked more like cut stone than poured concrete".

Carpenter Foreman Tom Reidy was also impressed with the results. He remarked, "I've worked with all different types of liners from virtually every manufacturer. Nothing compares to the performance of these liners."

The architect was also very happy with the outcome. He reports that another formliner manufacturer even expressed amazement at the excellent results produced.



Wood Patterns

2" WIDE AGED WOOD

Product Code	Description	Standard Sheet Size	Weight
F30705	0.070 mil Styrene	4' x 10'	15.20 LB
F30479	0.070 mil ABS	4' x 10'	16.00 LB

4" VARIABLE DEPTH ROUGH CEDAR

Product Code	Description	Standard Sheet Size	Weight
F947007	0.090 mil Styrene	4' x 10'	20.00 LB
F940005	0.110 mil ABS	4' x 10'	24.80 LB

4" WIDE AGED CEDAR

Product Code	Description	Standard Sheet Size	Weight
F30706	0.070 mil Styrene	4' x 10'	15.20 LB
F30480	0.070 mil ABS	4' x 10'	16.00 LB

4" WIDE AGED WOOD (ACTUAL 3-1/2" WIDTH)

Product Code	Description	Standard Sheet Size	Weight
F30703	0.070 mil Styrene	4' x 10'	15.20 LB
F30249	0.070 mil ABS	4' x 10'	16.00 LB

6" CEDAR

Product Code	Description	Standard Sheet Size	Weight
F70656	0.070 mil Styrene	4' x 10'	15.20 LB
F70657	0.070 mil ABS	4' x 10'	16.00 LB

6" PINE WOOD GRAIN

Product Code	Description	Standard Sheet Size	Weight
F3170595	0.070 mil Styrene	4' x 10'	15.20 LB
F3170512	0.070 mil ABS	4' x 10'	16.00 LB

6" WOODGRAIN SHIPLAP

Product Code	Description	Standard Sheet Size	Weight
F70603	0.090 mil Styrene	10' x 4'	20.00 LB
F70631	0.110 mil ABS	10' x 4'	24.80 LB

BARNWOOD

Product Code	Description	Standard Sheet Size	Weight
F947052	0.070 mil Styrene	4' x 10'	15.20 LB
F940021	0.070 mil ABS	4' x 10'	16.00 LB

RANDOM GROOVED BARNWOOD

Product Code	Description	Standard Sheet Size	Weight
F30704	0.070 mil Styrene	4' x 10'	15.20 LB
F30450	0.070 mil ABS	4' x 10'	16.00 LB

RANDOM WIDTH CEDAR PLANKS (4 FT 3/16 IN X 10 FT SHEET)

Product Code	Description	Standard Sheet Size	Weight
F70604	0.090 mil Styrene	noted	20.00 LB
F70632	0.110 mil ABS	noted	24.80 LB

ROUGH SAWN RANDOM LENGTH PLANK

Product Code	Description	Standard Sheet Size	Weight
F30707	0.070 mil Styrene	4' x 10'	15.20 LB
F30481	0.070 mil ABS	4' x 10'	16.00 LB



Other Patterns

3/16" STRIATED RANDOM

Product Code	Description	Standard Sheet Size	Weight
F30725	0.070 mil Styrene	4' x 10'	18.40 LB
F30246	0.070 mil ABS	4' x 10'	19.20 LB

3/8" STRIATED RANDOM

Product Code	Description	Standard Sheet Size	Weight
F30726	0.070 mil Styrene	4' x 10'	15.20 LB
F30493	0.070 mil ABS	4' x 10'	16.00 LB

3/4" AQUA WAVE

Product Code	Description	Standard Sheet Size	Weight
F70627	0.090 mil Styrene	4' x 10'	20.00 LB
F70655	0.110 mil ABS	4' x 10'	24.80 LB

BROOM SWEEP

Product Code	Description	Standard Sheet Size	Weight
F70660	0.070 mil Styrene	4' x 10'	15.20 LB
F70661	0.070 mil ABS	4' x 10'	16.00 LB

RANDOM BUSH HAMMER

Product Code	Description	Standard Sheet Size	Weight
F3170592	0.090 mil Styrene	4' x 10'	20.00 LB
F3170509	0.110 mil ABS	4' x 10'	24.80 LB

SANDBLAST - COARSE

Product Code	Description	Standard Sheet Size	Weight
F30423	0.070 mil Styrene	4' x 10'	15.20 LB
F30422	0.070 mil ABS	4' x 10'	16.00 LB

SANDBLAST - FINE

Product Code	Description	Standard Sheet Size	Weight
F70626	0.070 mil Styrene	4' x 10'	15.20 LB
F70654	0.070 mil ABS	4' x 10'	16.00 LB

SANDBLAST - MEDIUM

Product Code	Description	Standard Sheet Size	Weight
F3170596	0.070 mil Styrene	4' x 10'	15.20 LB
F3170513	0.070 mil ABS	4' x 10'	16.00 LB

SKIP TROWEL STUCCO

Product Code	Description	Standard Sheet Size	Weight
F70392	0.070 mil Styrene	4' x 10'	15.20 LB
F70356	0.070 mil ABS	4' x 10'	16.00 LB

SMOOTH SHEET

Product Code	Description	Standard Sheet Size	Weight
F30702	0.070 mil Styrene	4'-4 1/2" x 10'-4 1/2"	15.20 LB
F30435	0.070 mil ABS	4'-4 1/2" x 10'-4 1/2"	16.00 LB

SPLIT SLATE

Product Code	Description	Standard Sheet Size	Weight
F3170597	0.070 mil Styrene	4' x 10'	15.20 LB
F3170514	0.070 mil ABS	4' x 10'	16.00 LB



RUSTICATION AND CHAMFERS

Rustications, chamfers and covers provide innovative solutions for designers and contractors.

Labor saving installation of plastic rustications and chamfers eliminates common concrete appearance problems associated with wood trim products.



- Cleanest and sharpest finishes in the industry
- Most complete line of innovative profiles
- More than 50 years experience
- Responsive engineering and manufacturing support

CUSTOM PATTERNS

Complex Custom Work Made Easy

Accept any formliner project with confidence. We can make custom formliners to accurately depict your logo, mascot or even a photo. Dayton Superior has the experience and capability to help you cast your client's concepts in concrete.

Dayton Superior Formliner Advantages

- Most patterns shipped in less than 5 days.
- Top patterns stocked across the country for local, fast delivery.
- Choose from over 100 standard patterns.
- Custom patterns and murals are easily produced from your shop drawings.
- Full accessory line for cast-in-place, tilt-up or precast jobs.
- Select the best formliner solution for your job based on costs, reuses and ease of forming.
- Top quality form release agents and a full product line of cures and seals are available.



FORMLINERS

Basic Formliner Set-up

Step 1: Set forms

Set up concrete formwork. Level and brace the architectural side of the formwork first.

Step 2: Attach formliners

Concrete formliners can be attached with staples or screws depending on your application. Work with one sheet of formliner at a time and ensure all joints and patterns are square. Attach liner at 6" OC around the edges and 12" OC throughout the field.

Step 3: Close forms

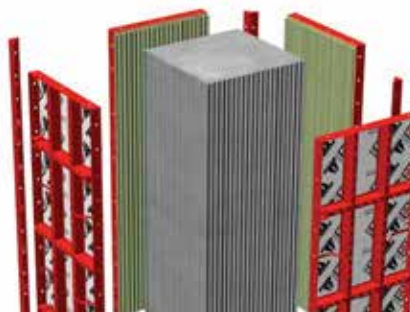
Finish forming wall or column and place ties as required. Application Guides for our forming systems include tie recommendations. Spray a Dayton Superior form release to ensure proper stripping.

Step 4: Caulk edges and pour concrete

Once your ties are placed, seal up the joints and tie holes to make sure you get the best looking finish. Use a waterproof silicone caulk for small gaps and a spray foam coated with silicone for larger holes. Pour concrete in 18-24" lifts and vibrate properly.

Step 5: Strip formwork

Strip all forms within 24 hours for best results. Strip the formwork at right angles to the concrete surface. Start from the top and slowly pry the form away from the face. Cure concrete with a Dayton Superior curing compound for best results.



Formliner Materials to Match Your Budget and Job Needs.

SPS Plastic™

A polystyrene formliner for single use applications. An inexpensive option. Easy to attach and store. Quick delivery time.



ABS Plastic

An ABS formliner that provides durability and performance for 5-10 reuses. An inexpensive option. Easy to attach and store. Quick delivery.



Cost-Effectiveness for Every Project

Take on any size project with confidence. Dayton Superior provides a full range of formliners to keep costs down and assuring excellent results. Inexpensive plastic liners suit a wide variety of projects.

Excellent Service and Top Quality

- Dayton Superior formliners are proudly made in America.
- Extensive Application Guides and field support.
- Years of architectural concrete experience.
- Multiple backing options for labor saving solutions.
- Different options for rustications and reveals.
- Sample patterns sent out daily.

Give us a call at any of our branch locations, email us at info@formtechinc.com, or click on formtechinc.com/quote to get a quote. Our experienced Form Tech representatives will answer your questions, and help you get your project started with some of the best concrete forming, shoring, and accessory products in the industry, backed by a professional and detail-oriented staff.



Charleston, SC

7377 Peppermill Lane
North Charleston,
SC 29418
843.628.3434



Detroit, MI

Corporate Headquarters
975 Ladd Road
Walled Lake,
MI 48390
Branch: 248.344.8260
Corporate: 248.344.8265



Charleston, WV

161 Industrial Road
St. Albans,
WV 25177
304.722.6804



Pittsburgh, PA

2850-A Kramer Road
Gibsonia,
PA 15044
412.331.4500



Charlotte, NC

1000 Thomasboro Road
Charlotte,
NC 28208
704.395.9910



Raleigh, NC

115 Peffinder Lane
Raleigh,
NC 27603
919.833.0911



Cleveland, OH

20801 Miles Road
North Randall,
OH 44128
216.692.0497



TRUSTED FORMWORK & ACCESSORY SPECIALISTS

800-876-4857 | info@formtechinc.com | formtechinc.com