

**GENERAL NOTES**

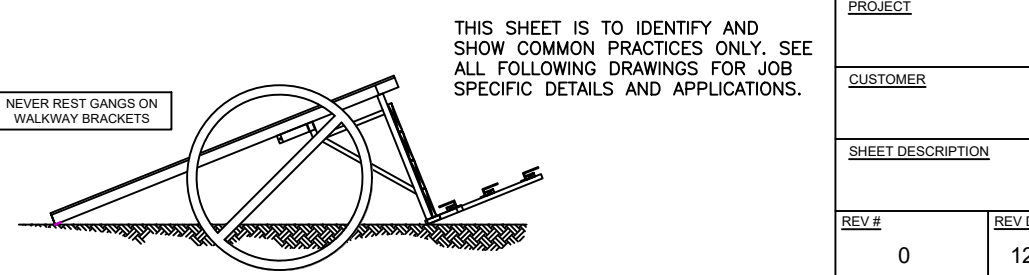
- ANY LAYOUT DRAWING FURNISHED BY ALLFORM TO A CUSTOMER IS PROVIDED AS A SERVICE TO CONCEPTUALLY ILLUSTRATE THE ASSEMBLY OF ALLFORM PRODUCTS ONLY. BECAUSE ALLFORM DOES NOT CONTROL JOBSITE ASSEMBLY OR PROCEDURES, GRADE OR QUALITY OF MATERIALS OR EQUIPMENT SUPPLIED BY OTHERS, IT IS THE RESPONSIBILITY OF THE CUSTOMER TO INTEGRATE ALLFORM DRAWINGS INTO COMPOSITE DRAWINGS SUITABLY COMPLETE FOR CONSTRUCTION PURPOSES CONSISTENT WITH SAFE PRACTICES AND OVERALL PROJECT OBJECTIVES.
- THESE DRAWINGS ARE BASED ON THE INFORMATION FURNISHED TO ALLFORM BY THE CUSTOMER. THE EQUIPMENT SHOWN ON THESE DRAWINGS MAY BE USED IN JURISDICTIONS HAVING LOCAL CODES WITH WHICH ALLFORM IS NOT FAMILIAR. ACCORDINGLY, THESE DRAWINGS ARE INTENDED TO ILLUSTRATE A PROPER MANNER OF USE OF THE EQUIPMENT ORDERED BY THE CUSTOMER UNDER THE CIRCUMSTANCES SPECIFIED BY THE CUSTOMER, BUT BEARS NO RESPONSIBILITY FOR THE ACTUAL ERECTION OR USE OF THE EQUIPMENT BY THE CUSTOMER OR ANY OTHER PERSON. ADDITIONALLY, THE CUSTOMER AGREES TO IDENTIFY AND HOLD ALLFORM HARMLESS WITH RESPECT TO ANY CLAIM OR LOSS ARISING IN CONNECTION WITH THE NEGLIGENCE OF THE ERECTION, MAINTENANCE OR USE OF THE EQUIPMENT BY THE CUSTOMER OR ANY OTHER PERSON DURING THE TIME THAT THE EQUIPMENT IS LEASED TO OR USED BY THE CUSTOMER.
- THE CUSTOMER BEARS THE SOLE RESPONSIBILITY FOR ENSURING THAT ANY ERECTION OR USE OF THE EQUIPMENT SHOWN ON THESE DRAWINGS CONFORMS TO ALL LAWS, ORDINANCES AND LOCAL CODES AND FOR CHECKING THE ACCURACY OF FIELD DETAILS AND DIMENSIONS.
- ALLFORM DOES NOT PROVIDE ALL ITEMS ILLUSTRATED ON THESE DRAWINGS. THOSE ITEMS NOT SUPPLIED BY ALLFORM SHOULD BE ERECTED ACCORDING TO DRAWINGS FURNISHED BY THEIR MANUFACTURER OR SUPPLIER. THE FINAL RESPONSIBILITY FOR DESIGN AND PLACEMENT OF THESE ITEMS REMAINS WITH THE USER.
- THE ENGINEERING DEPT. MUST BE CONSULTED BEFORE EQUIPMENT IS ERECTED IN A MANNER OTHER THAN AS SHOWN ON THESE DRAWINGS. ONLY THE ENGINEERING DEPT. IS AUTHORIZED TO MAKE CHANGES ON THESE DRAWINGS.
- ALL JOB-BUILT BULKHEADS AND FILLERS ARE ILLUSTRATIONS ONLY. CONTRACTOR IS RESPONSIBLE FOR THE FABRICATION, PLACEMENT, AND STRUCTURAL INTEGRITY OF EACH ITEM.
- UNLESS PROPOSAL STATES OTHERWISE, ALLFORM DOES NOT FURNISH WOOD FOR SCAFFOLDS AND HANDRAILS AS PART OF THE FORMING SYSTEM QUOTATION. THESE ITEMS ARE QUOTED SEPARATELY.
- WALL AND COLUMN FORMS MUST BE ADEQUATELY BRACED TO SAFELY SUPPORT ALL FORESEEABLE LATERAL LOADS ASSOCIATED WITH WIND, ECCENTRIC LOADING, FALL PROTECTION ANCHORAGE, ETC. THE MATERIALS, QUANTITIES, LOCATIONS AND METHODS OF ATTACHMENT AND ANCHORAGE OF THE BRACING DESIGN SHALL BE THE RESPONSIBILITY OF THE CONTRACTOR BASED ON JOBSITE CONDITIONS AND APPLICABLE INDUSTRY STANDARDS.
- THIS DRAWING IS BASED ON A MAXIMUM ALLOWABLE CONCRETE PRESSURE OF 1,250 LBS/SF AS DETERMINED BY THE AMERICAN CONCRETE INSTITUTE FORMULAS AND PROCEDURES.
- SAFE LOAD CAPACITY OF TIES IS 18,000 LBS AT A 2 TO 1 SAFETY FACTOR UNLESS NOTED OTHERWISE.
- CONTRACTOR MUST ENSURE ALL TIES BY CONTRACTOR, IF ANY, CAN RESIST THE NOTED POUR PRESSURE IN GENERAL NOTE #9. OTHERWISE, IT IS THE CONTRACTOR'S SOLE RESPONSIBILITY TO REDUCE THE POUR RATE ACCORDINGLY.

REFER TO MANUFACTURER'S APPLICATION GUIDE(S) FOR ADDITIONAL PRODUCT APPLICATION AND SAFETY INFORMATION.

GANG WEIGHT, INCLUDING LUMBER/STEEL WALERS AND STRONGBACKS, BUT EXCLUDING ADDITIONAL MATERIALS FURNISHED BY OTHERS, IS APPROXIMATELY AS NOTED ON THE FOLLOWING ALLFORM DRAWINGS. REFER TO YOUR ALLFORM REPRESENTATIVE FOR ANY CHANGES IN SIZE, OR COMPONENTS OF ANY GANG.

LIFTING BRACKET LOCATIONS SHOWN ON THE GANG FORMS WERE DETERMINED SO THAT THE GANG DOES NOT IMPOSE A LOAD ON ANY ONE BRACKET GREATER THAN ITS CAPACITY. IT IS THE RESPONSIBILITY OF THE CONTRACTOR TO INSURE THAT THE LIFTING METHOD DOES NOT IMPOSE A LOAD ON ANY ONE LIFTING BRACKET GREATER THAN ITS RATED CAPACITY.

USE ALL BRACKETS FOR LIFTING. A SPREADER BEAM (BY OTHERS) IS REQUIRED WHEN LIFTING FROM MORE THAN ONE LIFTING BRACKET SO THAT A STRAIGHT UP PULL IS IMPOSED ON THE BRACKETS. DO NOT REST GANG FORMS ON WALKWAY BRACKETS.



**PRELIMINARY, NOT FOR CONSTRUCTION**

**allform**™

|                   |             |       |              |
|-------------------|-------------|-------|--------------|
| PROJECT           | PROJECT     |       |              |
| CUSTOMER          | CUSTOMER    |       |              |
| SHEET DESCRIPTION | COVER SHEET |       |              |
| REV #             | REV DATE    | SCALE | SHEET NUMBER |
| 0                 | 12/17/21    |       | 1            |

Give us a call at any of our branch locations, email us at [info@formtechinc.com](mailto:info@formtechinc.com), or click on [formtechinc.com/quote](http://formtechinc.com/quote) to get a quote. Our experienced Form Tech representatives will answer your questions, and help you get your project started with some of the best concrete forming, shoring, and accessory products in the industry, backed by a professional and detail-oriented staff.

---



### Charleston, SC

7377 Peppermill Lane  
North Charleston,  
SC 29418  
843.628.3434



### Detroit, MI

Corporate Headquarters  
975 Ladd Road  
Walled Lake,  
MI 48390  
Branch: 248.344.8260  
Corporate: 248.344.8265

---



### Charleston, WV

161 Industrial Road  
St. Albans,  
WV 25177  
304.722.6804



### Pittsburgh, PA

2850-A Kramer Road  
Gibsonia,  
PA 15044  
412.331.4500

---



### Charlotte, NC

1000 Thomasboro Road  
Charlotte,  
NC 28208  
704.395.9910



### Raleigh, NC

115 Peffinder Lane  
Raleigh,  
NC 27603  
919.833.0911

---



### Cleveland, OH

20801 Miles Road  
North Randall,  
OH 44128  
216.692.0497



TRUSTED FORMWORK & ACCESSORY SPECIALISTS

800-876-4857 | [info@formtechinc.com](mailto:info@formtechinc.com) | [formtechinc.com](http://formtechinc.com)