



**doka**

**F FORMTECH**  
concrete forms, inc.

The Formwork Experts.

# Column formwork Framax Xlife

Columns from the Framax Xlife construction kit [formtechinc.com](http://formtechinc.com)

## Columns from the Framax Xlife construction kit

Universal panels from the framed formwork systems are ideal for forming varied cross-sections of columns in a 2" increment – without needing a dedicated column formwork system on the site.

### Flexible, fast forming

with Framax Xlife universal panels

Fast and efficient working, thanks to

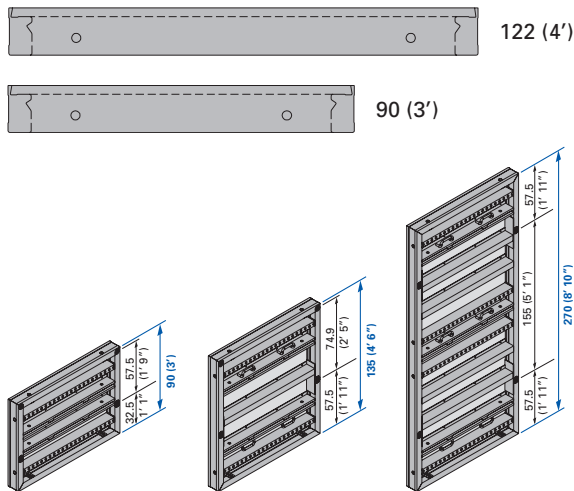
- column cross-sections of up to 42"
- flexible adaptation in 2" increments
- panels are quick to assemble and reset

### Reduced quantities and costs

thanks to flexibility

The versatile universal panels can be used for

- columns, corners, bulkheads and wall junctions and also as Framax Xlife wall elements



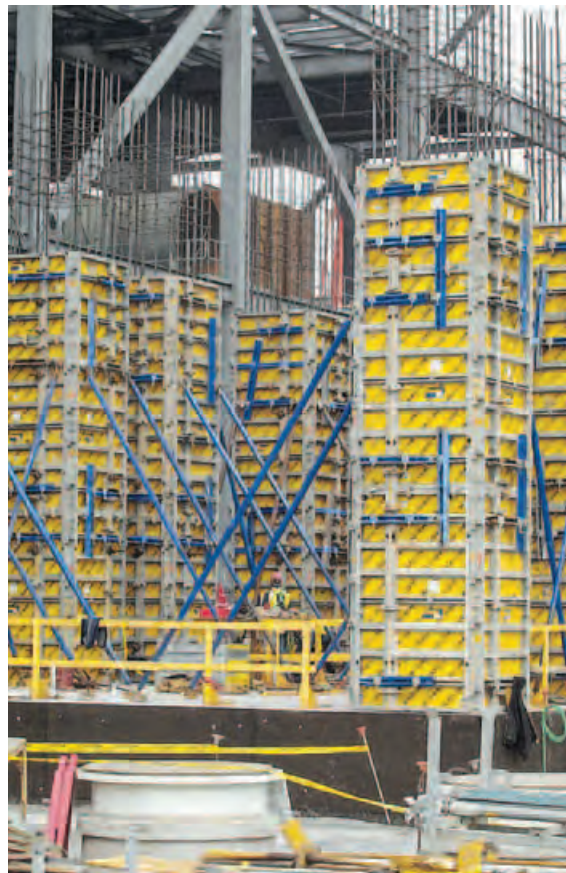
Framax Xlife universal panels are available in widths of 3'-0" (90 cm) and 4'-0" (122 cm) and in panel heights of 3'-0" (90 cm), 4'-6" (135 cm), 8'-10" (270 cm).

### Enhanced safety

using Ladder system XS and column formwork platform

Safety right from the start, thanks to

- safe workplace access routes for climbing up and down
- safe handling for attaching and detaching the formwork
- safe working during pouring operations



Give us a call at any of our branch locations, email us at [info@formtechinc.com](mailto:info@formtechinc.com), or click on [formtechinc.com/quote](http://formtechinc.com/quote) to get a quote. Our experienced Form Tech representatives will answer your questions, and help you get your project started with some of the best concrete forming, shoring, and accessory products in the industry, backed by a professional and detail-oriented staff.

---



### Charleston, SC

7377 Peppermill Lane  
North Charleston,  
SC 29418  
843.628.3434



### Detroit, MI

Corporate Headquarters  
975 Ladd Road  
Walled Lake,  
MI 48390  
Branch: 248.344.8260  
Corporate: 248.344.8265

---



### Charleston, WV

161 Industrial Road  
St. Albans,  
WV 25177  
304.722.6804



### Pittsburgh, PA

2850-A Kramer Road  
Gibsonia,  
PA 15044  
412.331.4500

---



### Charlotte, NC

1000 Thomasboro Road  
Charlotte,  
NC 28208  
704.395.9910



### Raleigh, NC

115 Peffinder Lane  
Raleigh,  
NC 27603  
919.833.0911

---



### Cleveland, OH

20801 Miles Road  
North Randall,  
OH 44128  
216.692.0497



TRUSTED FORMWORK & ACCESSORY SPECIALISTS

800-876-4857 | [info@formtechinc.com](mailto:info@formtechinc.com) | [formtechinc.com](http://formtechinc.com)