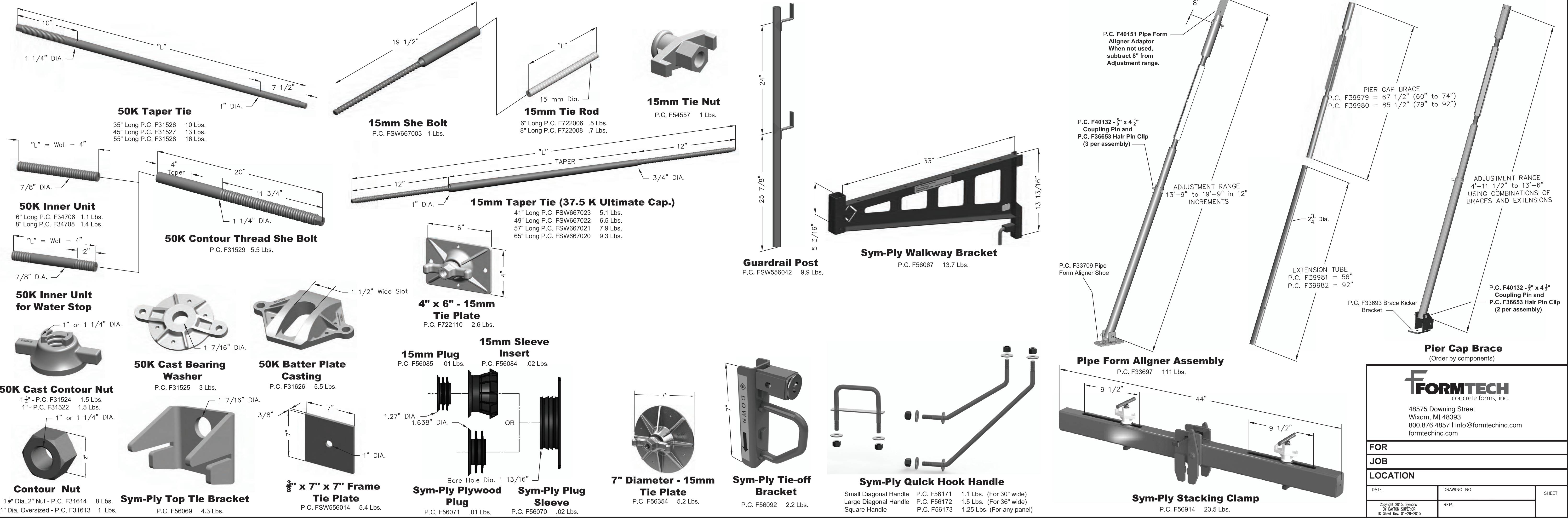
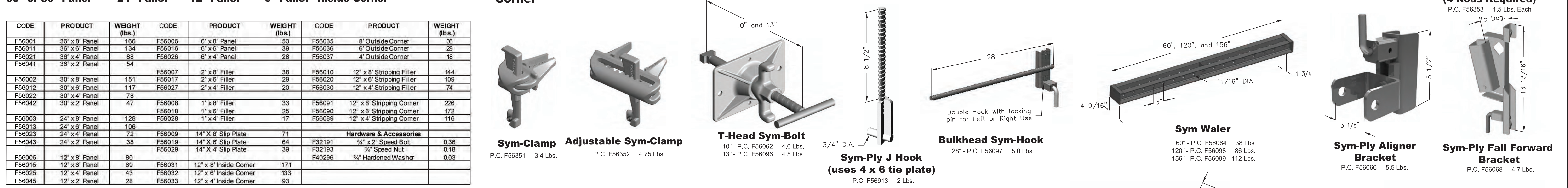


CODE	PRODUCT	WEIGHT (lbs.)	CODE	PRODUCT	WEIGHT (lbs.)	CODE	PRODUCT	WEIGHT (lbs.)			
F56001	36" x 8' Panel	166	F56006	6" x 8' Panel	53	F56035	8" Outside Corner	36			
F56011	36" x 6' Panel	134	F56016	6" x 6' Panel	39	F56036	6" Outside Corner	28			
F56021	36" x 4' Panel	88	F56026	6" x 4' Panel	28	F56037	4" Outside Corner	18			
F56041	36" x 2' Panel	54	F56007	2" x 8' Filler	38	F56010	12" x 8' Stripping Filler	144			
F56002	30" x 8' Panel	151	F56017	2" x 6' Filler	29	F56020	12" x 6' Stripping Filler	109			
F56012	30" x 6' Panel	117	F56027	2" x 4' Filler	20	F56030	12" x 4' Stripping Filler	74			
F56022	30" x 4' Panel	78	F56008	1" x 8' Filler	33	F56091	12" x 8' Stripping Corner	226			
F56042	30" x 2' Panel	47	F56018	1" x 6' Filler	25	F56090	12" x 6' Stripping Corner	172			
F56003	24" x 8' Panel	128	F56028	1" x 4' Filler	17	F56089	12" x 4' Stripping Corner	116			
F56013	24" x 6' Panel	106	F56009	14" x 8' Slip Plate	71	Hardware & Accessories					
F56023	24" x 4' Panel	72	F56019	14" x 6' Slip Plate	64				F32191	3/4" x 2" Speed Bolt	0.38
F56043	24" x 2' Panel	38	F56029	14" x 4' Slip Plate	39				F32193	3/4" Speed Nut	0.18
F56005	12" x 8' Panel	80	F56031	12" x 8' Inside Corner	171				F40296	3/4" Hardened Washer	0.03
F56015	12" x 6' Panel	69	F56032	12" x 6' Inside Corner	133						
F56025	12" x 4' Panel	43	F56033	12" x 4' Inside Corner	93						
F56045	12" x 2' Panel	28									



F FORMTECH
concrete forms, inc.

48575 Downing Street
 Wixom, MI 48393
 800.876.4857 | info@formtechinc.com
 formtechinc.com

FOR		DATE	DRAWING NO.	SHEET
JOB		REP.		
LOCATION				

Copyright 2015, Symons
 BY DAYTON SUPERIOR
 ID Sheet Rev. 01-28-2015

Give us a call at any of our branch locations, email us at info@formtechinc.com, or click on formtechinc.com/quote to get a quote. Our experienced Form Tech representatives will answer your questions, and help you get your project started with some of the best concrete forming, shoring, and accessory products in the industry, backed by a professional and detail-oriented staff.



Charleston, SC

7377 Peppermill Lane
North Charleston,
SC 29418
843.628.3434



Detroit, MI

Corporate Headquarters
975 Ladd Road
Walled Lake,
MI 48390
Branch: 248.344.8260
Corporate: 248.344.8265



Charleston, WV

161 Industrial Road
St. Albans,
WV 25177
304.722.6804



Pittsburgh, PA

2850-A Kramer Road
Gibsonia,
PA 15044
412.331.4500



Charlotte, NC

1000 Thomasboro Road
Charlotte,
NC 28208
704.395.9910



Raleigh, NC

115 Peffinder Lane
Raleigh,
NC 27603
919.833.0911



Cleveland, OH

20801 Miles Road
North Randall,
OH 44128
216.692.0497



TRUSTED FORMWORK & ACCESSORY SPECIALISTS

800-876-4857 | info@formtechinc.com | formtechinc.com