

# One-Piece Round Column Forms

## 1. SHIPPING AND RECEIVING

**HOW SHIPPED:** MFG one-piece round column forms are usually shipped by commercial truck due to limited size of shipments. Depending on the diameter of the columns, the columns will be nested inside one another ranging from two to six units per bundle. The bracing collars, nuts and bolts will also be included inside of the bundle or on a separate pallet.

**ATTACHMENTS, MECHANICAL AND OTHER SUB TRADES:** Do not drill holes, punch or otherwise mutilate MFG one-piece round column forms in any way without written authorization from the manufacturer. The only exception to this is the drilling of the column flange to accommodate stacking as described on the following page in Extra Height Columns.

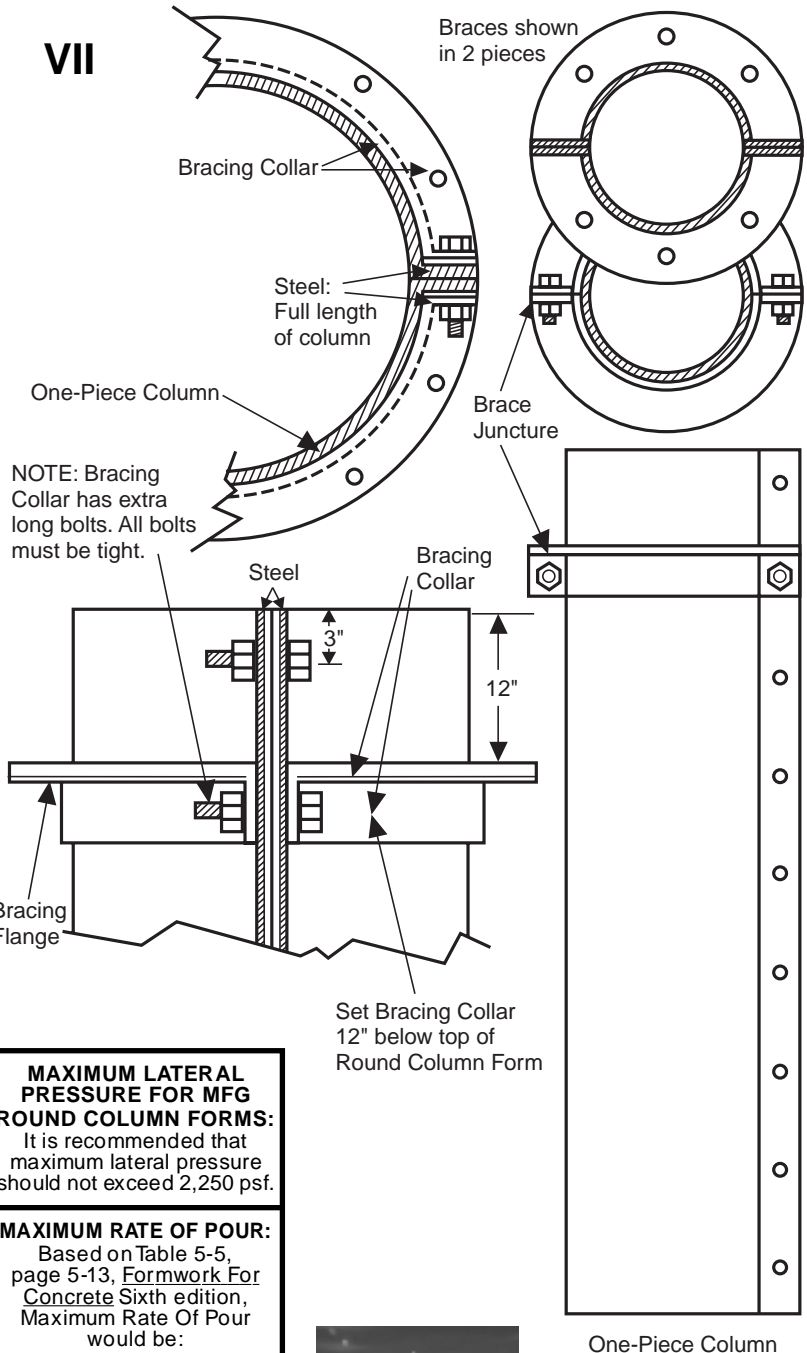
**APPLICATION OF FORM RELEASE:** It is essential that form release be applied to the interior of the column form prior to each use. Application of the form release should be per the form release manufacturer's instructions.

## 2. PLACING OF THE COLUMNS

**Be certain form release has been applied prior to installing the column form.**

Use kickers, secured to the slab, to keep the bottom of the column in position. Secure the bracing collar approximately 12" from the top of the column, and attach braces to the collar as required to hold the column vertical while filling. (See illustration VII and VIII.)

Check to make certain that all bolts are tight, that the bracing collar is in the proper position, and that all bracing is sufficient to hold each column in position during filling. When filling the column, do not dump the concrete. Each column has affixed to it a label stating the maximum rate of pour, very similar to the chart at right.



## Sizes

Column Diameter	Length Up To	Approx. Wt. Per Lineal Ft.	Approx. Vol. of Concrete Per Lineal Ft.
12"	20'	9.9 lbs.	.8 cu. ft.
14"	20'	10.0 lbs.	1.0 cu. ft.
16"	20'	11.1 lbs.	1.4 cu. ft.
18"	20'	12.3 lbs.	1.8 cu. ft.
20"	20'	13.1 lbs.	2.2 cu. ft.
22"	20'	14.2 lbs.	2.6 cu. ft.
24"	20'	15.2 lbs.	3.1 cu. ft.
26"	20'	16.2 lbs.	3.6 cu. ft.
28"	20'	17.3 lbs.	4.2 cu. ft.
30"	20'	18.4 lbs.	4.9 cu. ft.
32"	20'	19.5 lbs.	5.5 cu. ft.
34"	20'	20.5 lbs.	6.3 cu. ft.
36"	20'	21.5 lbs.	7.0 cu. ft.
38"	20'	22.6 lbs.	7.9 cu. ft.
40"	20'	23.7 lbs.	8.7 cu. ft.
42"	20'	24.8 lbs.	9.6 cu. ft.
44"	20'	25.8 lbs.	10.6 cu. ft.
46"	20'	26.8 lbs.	11.5 cu. ft.
48"	20'	27.9 lbs.	12.6 cu. ft.

**MAXIMUM LATERAL PRESSURE FOR MFG ROUND COLUMN FORMS:**  
It is recommended that maximum lateral pressure should not exceed 2,250 psf.

**MAXIMUM RATE OF POUR:**  
Based on Table 5-5, page 5-13, *Formwork For Concrete* Sixth edition, Maximum Rate of Pour would be:

At 90° F:	20 feet per hour
At 80° F:	18 feet per hour
At 70° F:	16 feet per hour
At 60° F:	14 feet per hour
At 50° F:	11 feet per hour
At 40° F:	9 feet per hour

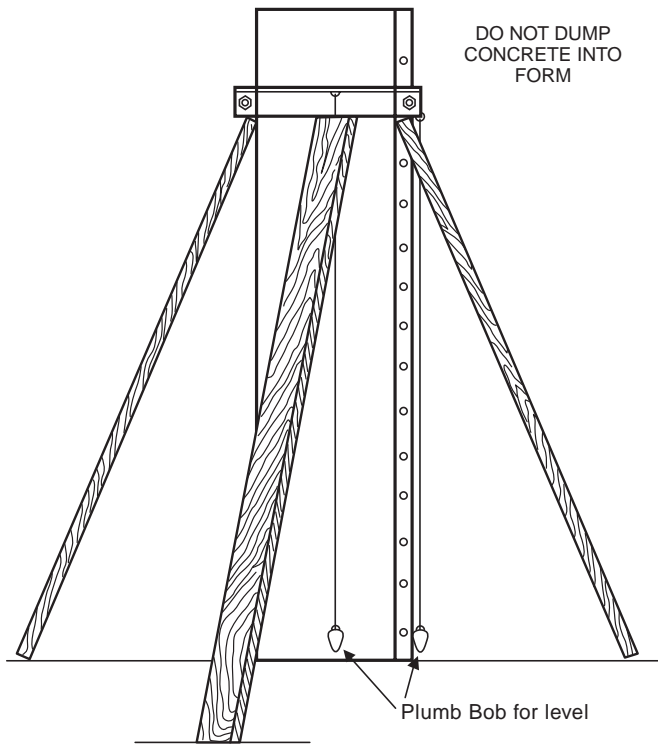
Applies only for normal weight concrete made with Type 1 cement, no admixtures or pozzolans, slump no more than 4 inches, and vibration depth limited to 4 feet or less.



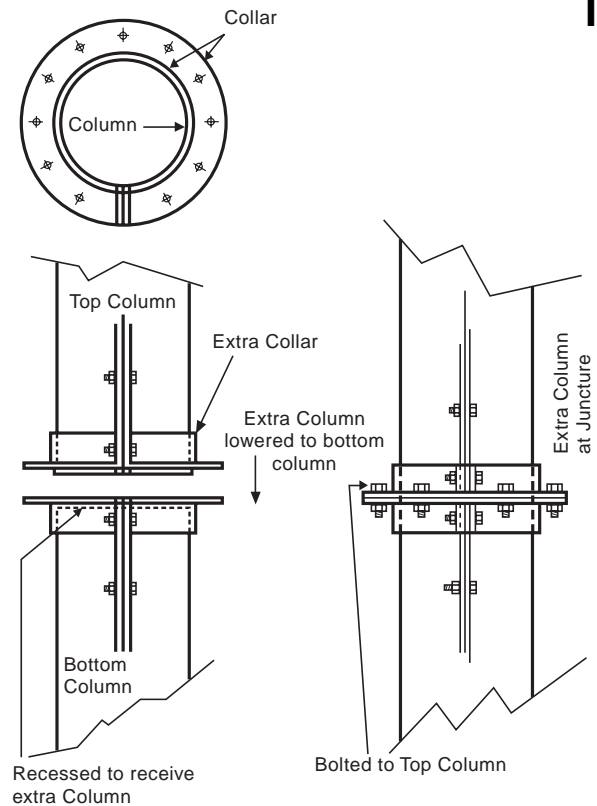
**MOLDED FIBER GLASS CONSTRUCTION PRODUCTS COMPANY**

VIII

Use guy wires or bracing to hold into position.  
Be careful not to pull out of round.



IX



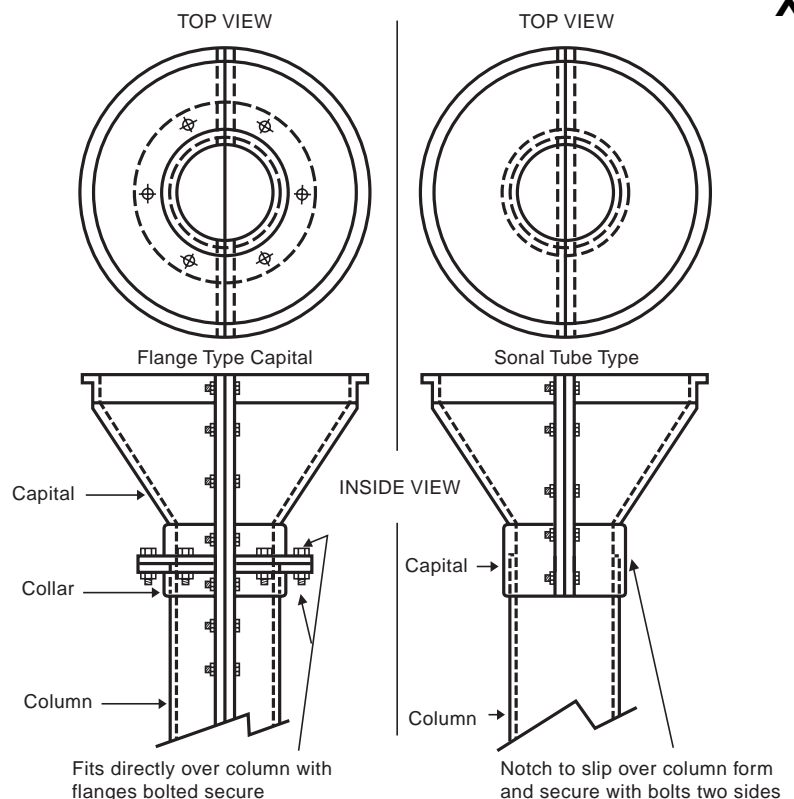
### 3. EXTRA HEIGHT COLUMNS

(Fiberglass collars are required for stacking. Do not attempt to stack without.)

Extra height can be obtained by stacking MFG one-piece round column forms. In order to accommodate this, an extra collar is required. Place one collar over the juncture and bolt to bottom form allowing the collar to extend about 1-1/2" to 2" beyond the actual column form itself. The other section of the column is placed immediately above, sitting on the column form below, and another collar is attached at the juncture. The two collars are then joined for strength. It may be necessary in utilizing the above procedure to re-drill holes to accommodate the collars in the exact required position.

Column capitals can also be utilized with MFG one-piece round column forms. (See illustration X.)

X



## 4. REMOVAL OF THE FORM

Remove all nuts and bolts. Spread the form open by pulling from each side (pull across the diameter of the column). The column is designed to open completely for removal from around the cast column. MFG one-piece round columns can also be lifted off vertically. Remove all bolts, etc. Wedge the form flanges apart to be certain that the form is loose from the cast column, and by attaching a bolt at the top of the column, lift it off vertically.

### CAUTION

PLEASE CAUTION WORKERS WHEN STRIPPING THE COLUMN FORM FROM AROUND THE COLUMN THAT ONCE THE COLUMN FORM IS FREE FROM THE POURED COLUMN, IT WILL TEND TO SNAP BACK INTO THE CLOSED POSITION. THEREFORE, DO NOT PUT YOUR FINGERS BETWEEN THE FLANGES AS SERIOUS INJURY COULD OCCUR.

## 5. CLEANING OF THE FORMS

Spread the column form open and position a permanent member similar to three notched 2 x 6's to hold the column open, then wipe with burlap saturated with form release. This will not only remove any grout or green concrete which may be left on the form, but also prepares it for the next filling.

**Column forms should be returned in ready-to-use condition, clean and free of all concrete. If columns are not received clean and free of concrete, you will be subject to cleaning and reconditioning charges equal to one month's rent per form.**

To reduce the cost of return freight cost, column forms should be returned nested together five to six to a bundle with the collars wired inside the bundle. Nuts and bolts should be placed in an appropriately sealed container. Any damage or missing items will be billed accordingly.

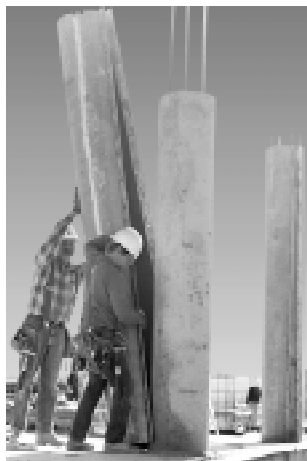
## Make your next round column as easy as 1, 2, 3.



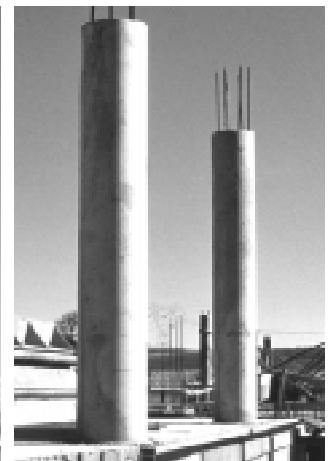
**1. Setup**



**2. Fill**



**3. Remove**



**Finished**

Give us a call at any of our branch locations, email us at [info@formtechinc.com](mailto:info@formtechinc.com), or click on [formtechinc.com/quote](http://formtechinc.com/quote) to get a quote. Our experienced Form Tech representatives will answer your questions, and help you get your project started with some of the best concrete forming, shoring, and accessory products in the industry, backed by a professional and detail-oriented staff.

---



### Charleston, SC

7377 Peppermill Lane  
North Charleston,  
SC 29418  
843.628.3434



### Detroit, MI

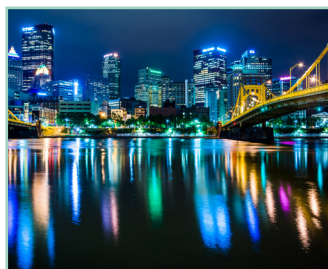
Corporate Headquarters  
975 Ladd Road  
Walled Lake,  
MI 48390  
Branch: 248.344.8260  
Corporate: 248.344.8265

---



### Charleston, WV

161 Industrial Road  
St. Albans,  
WV 25177  
304.722.6804



### Pittsburgh, PA

2850-A Kramer Road  
Gibsonia,  
PA 15044  
412.331.4500

---



### Charlotte, NC

1000 Thomasboro Road  
Charlotte,  
NC 28208  
704.395.9910



### Raleigh, NC

115 Pelfinder Lane  
Raleigh,  
NC 27603  
919.833.0911

---



### Cleveland, OH

20801 Miles Road  
North Randall,  
OH 44128  
216.692.0497



TRUSTED FORMWORK & ACCESSORY SPECIALISTS

800-876-4857 | [info@formtechinc.com](mailto:info@formtechinc.com) | [formtechinc.com](http://formtechinc.com)