



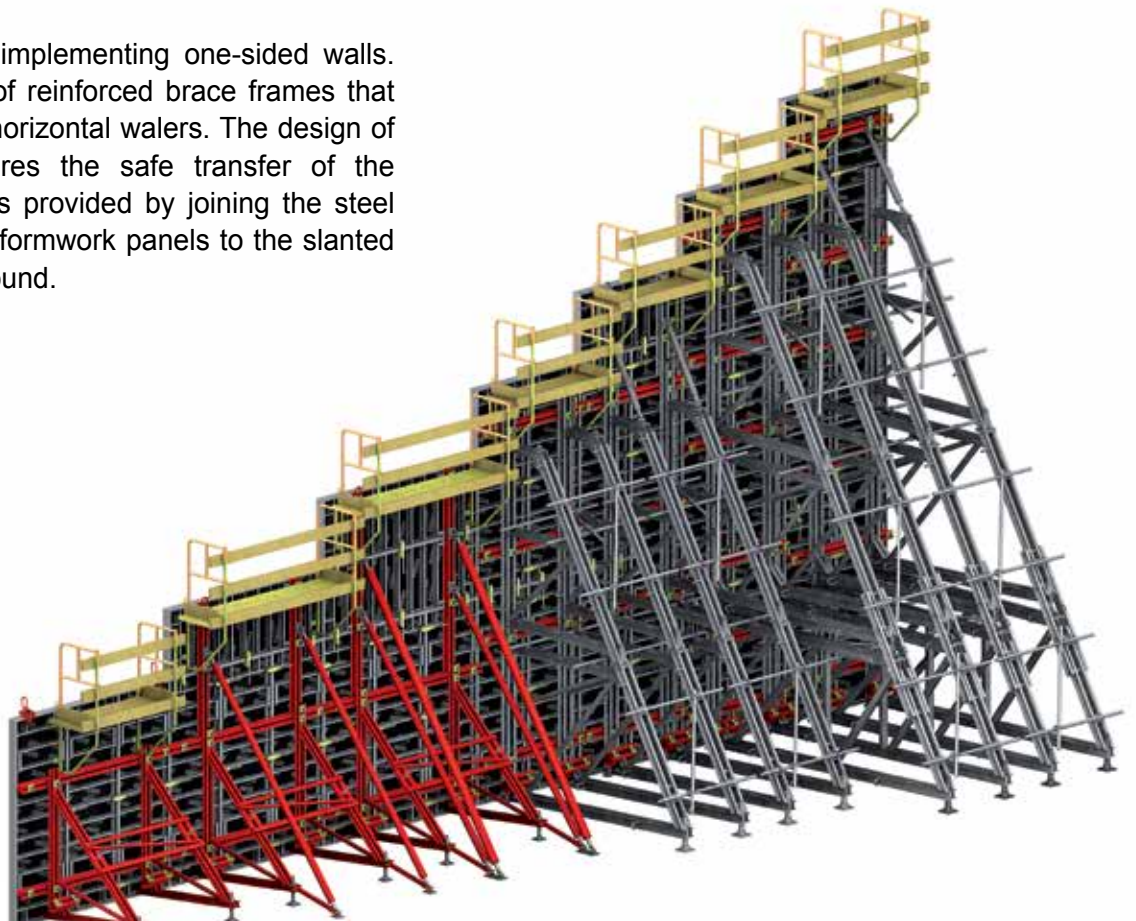
One-Sided Wall Systems



DeVos Children Hospital, United States

One-Sided Walls

Support structure for implementing one-sided walls. The system consists of reinforced brace frames that are coupled with two horizontal walers. The design of its components ensures the safe transfer of the concrete loads. This is provided by joining the steel brace frames and the formwork panels to the slanted anchorages on the ground.





One-Sided Wall 9'-10 ¹/₈" (3 m) in height

- Easy to assemble, versatile system.
- Light and easy to transport and move through the site.
- Allowed pressure: 1,250 psf (60 kN/m²).
- Maximum height 10'-9 ¹⁵/₁₆" (3.30 m).
- This element can be lifted together with the Alispaly Wall formwork system.
- Accessories up to 16.5 ft height.



One-Sided Wall 19'-8 ¹/₄" (6 m) in height

- Allowed pressure of 60 kN/m² (up to 22'-11 ⁹/₁₆" [7 m] high).
- Adjustable front support: allows formwork adjusting to the ground, preventing concrete grout leakage.
- A variety of crane lifting points are available, depending on gravity loads.



One-Sided Wall 29'-6 ⁵/₁₆" (9 m) height

- Allowed pressure of 40 kN/m².
- Easy assembly between brace frames.
- Disassembly of the formwork from the Upper Brace Frames is not required when the brace frame is placed under 29'-6 ⁵/₁₆" (9 m).
- A variety of crane lifting points are available, depending on gravity loads.



**Comprehensive sales,
logistics and technical
service**



**Climbing systems,
safe and reliable**



**Mecano Alsina:
Cost-effective and
safe shoring solutions**



**Civil works systems
and solutions**



**Resistant and safe
post-shore, shoring and
scaffolding systems**



**Tunnel, harbors, and
self-travelers**



**Columns, pilasters
and shear wall
solutions**



**Safety accessories
and systems**



**Straight and curved
wall solutions, both
crane-set and
hand-set**



**Wide range of
accessories for all
our systems**

F FORMTECH
concrete forms, inc.

Alsina
FORMWORK SOLUTIONS

48575 Downing Street
Wixom, MI 48393
800.876.4857 | info@formtechinc.com
formtechinc.com

Give us a call at any of our branch locations, email us at info@formtechinc.com, or click on formtechinc.com/quote to get a quote. Our experienced Form Tech representatives will answer your questions, and help you get your project started with some of the best concrete forming, shoring, and accessory products in the industry, backed by a professional and detail-oriented staff.



Charleston, SC

7377 Peppermill Lane
North Charleston,
SC 29418
843.628.3434



Detroit, MI

Corporate Headquarters
975 Ladd Road
Walled Lake,
MI 48390
Branch: 248.344.8260
Corporate: 248.344.8265



Charleston, WV

161 Industrial Road
St. Albans,
WV 25177
304.722.6804



Pittsburgh, PA

2850-A Kramer Road
Gibsonia,
PA 15044
412.331.4500



Charlotte, NC

1000 Thomasboro Road
Charlotte,
NC 28208
704.395.9910



Raleigh, NC

115 Peffinder Lane
Raleigh,
NC 27603
919.833.0911



Cleveland, OH

20801 Miles Road
North Randall,
OH 44128
216.692.0497



TRUSTED FORMWORK & ACCESSORY SPECIALISTS

800-876-4857 | info@formtechinc.com | formtechinc.com