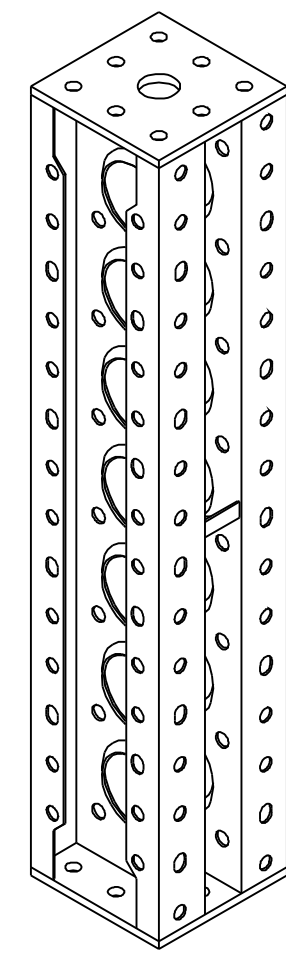


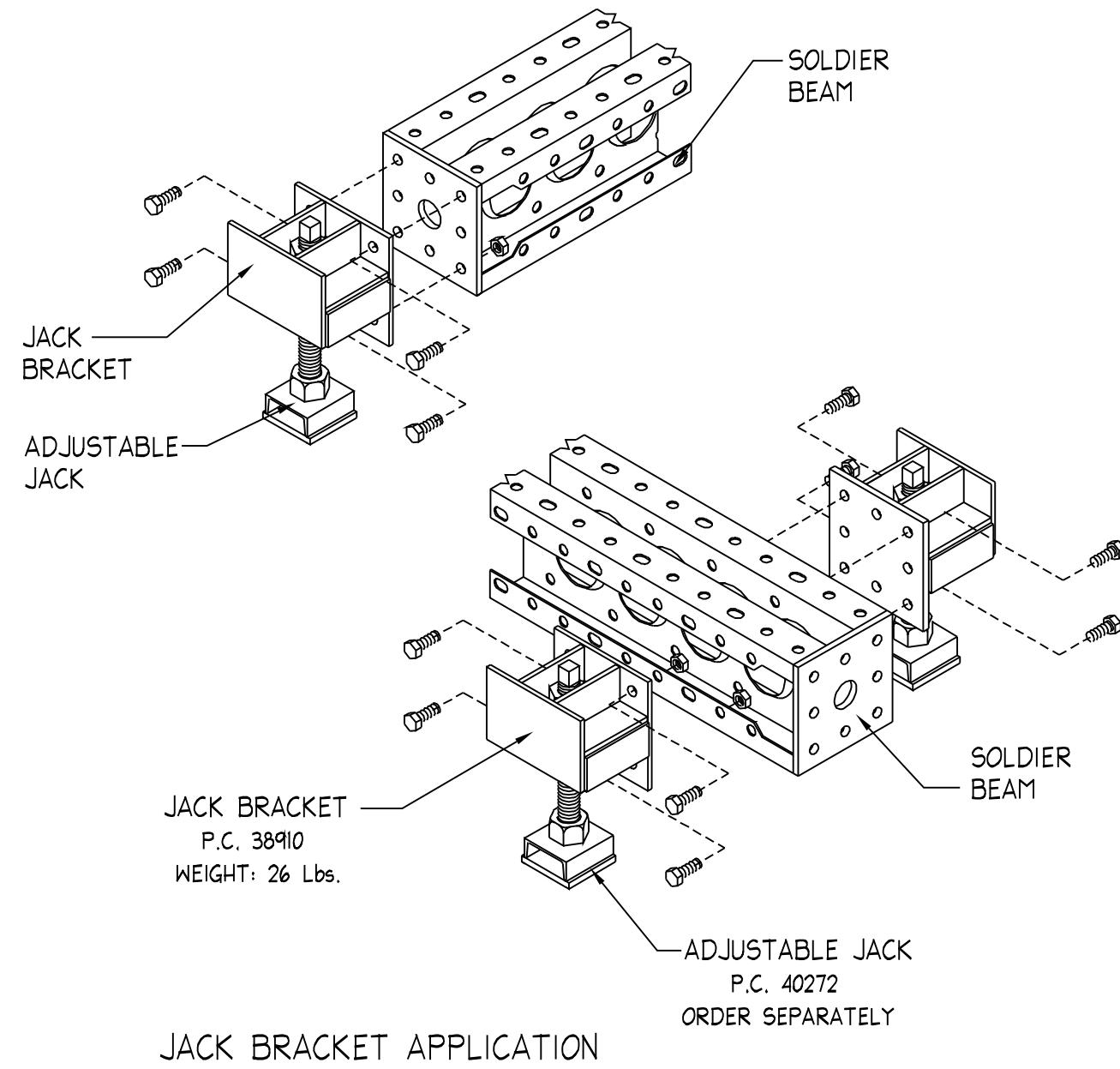
# SYMONS SOLDIER IDENTIFICATION CHART

This chart will assist in order preparation and in the preparation of return equipment lists for all Soldier System components and associated components. When placing an order either by mail or by phone, please identify each component by its correct name and product code number. Should you have any questions about availability of a special product, please contact your Symons Account Manager or Symons Distribution Center.

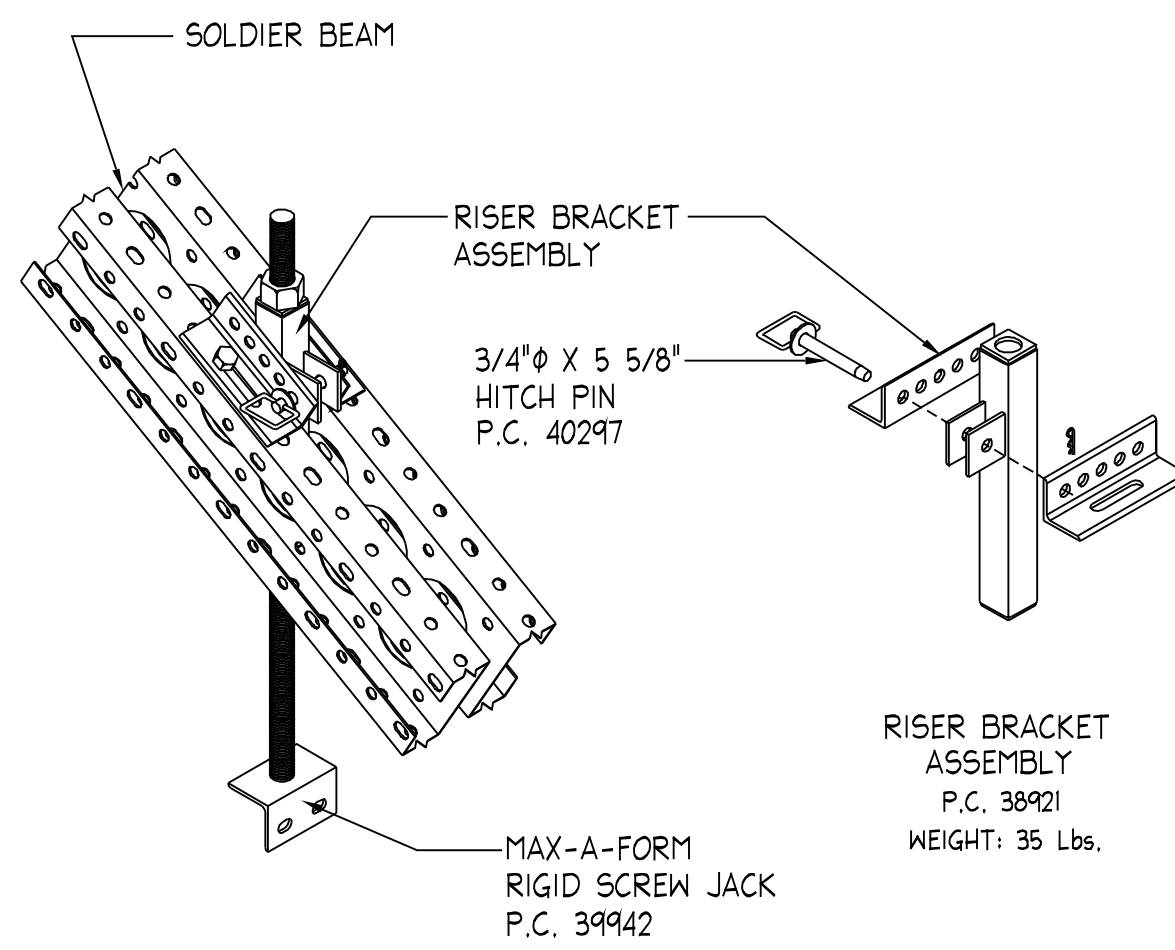


SOLDIER BEAMS		
CODE	DESCRIPTION	WT.
38904	12'-0" SOLDIER BEAM	770
38902	8'-0" SOLDIER BEAM	570
38901	4'-0" SOLDIER BEAM	415
38917	3'-0" SOLDIER BEAM	370
38903	2'-0" SOLDIER BEAM	310
38900	1'-6" SOLDIER BEAM	290

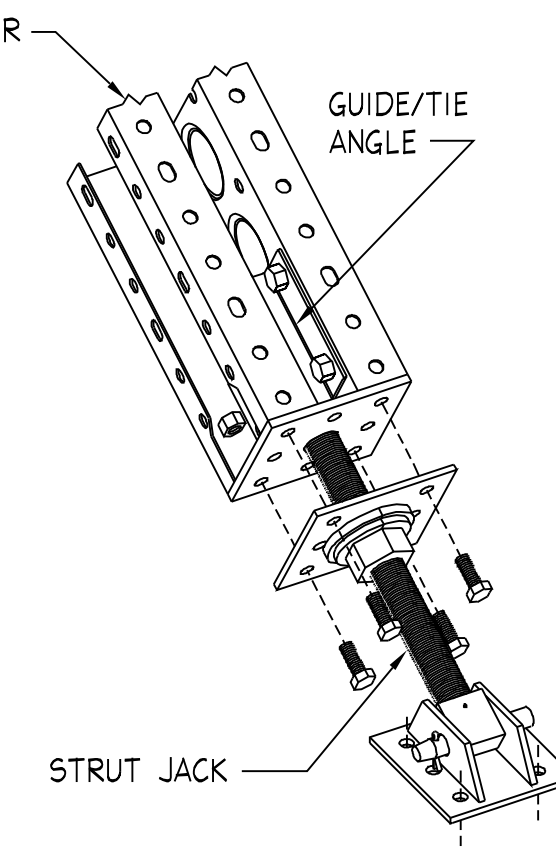
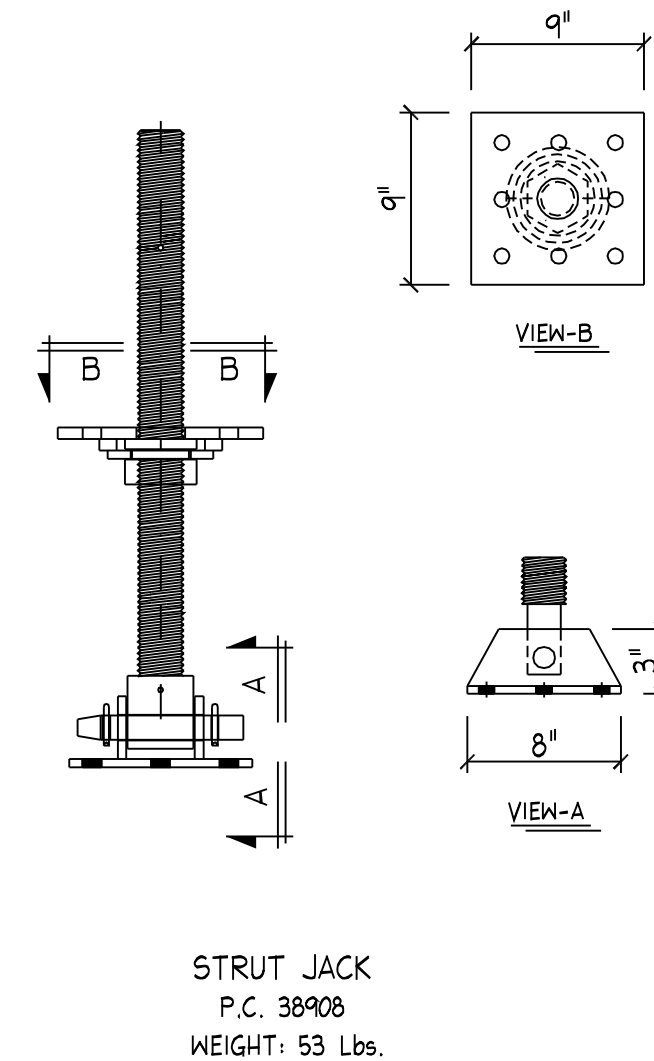
TYPICAL SOLDIER BEAM



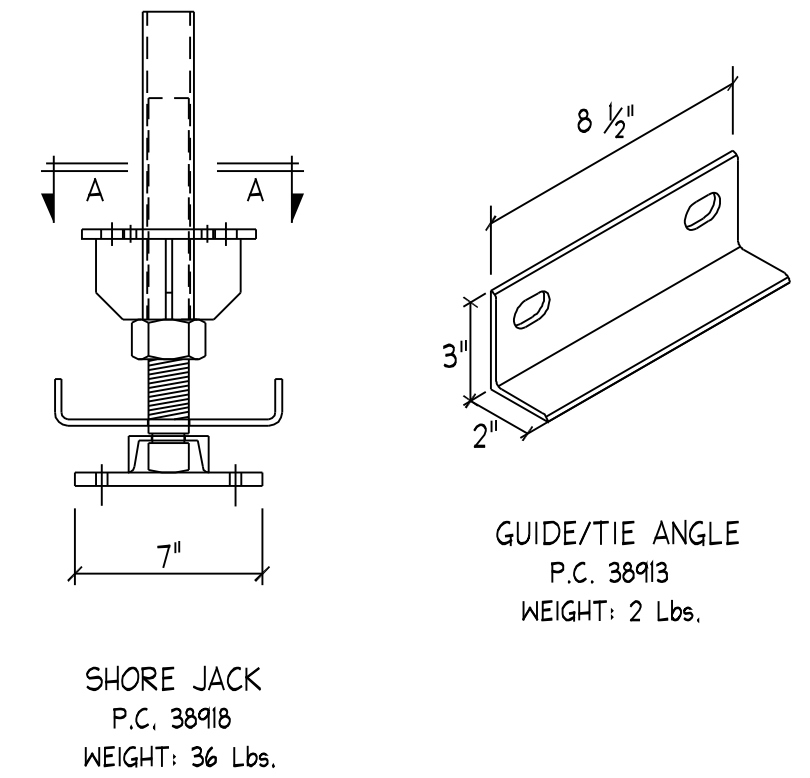
JACK BRACKET APPLICATION



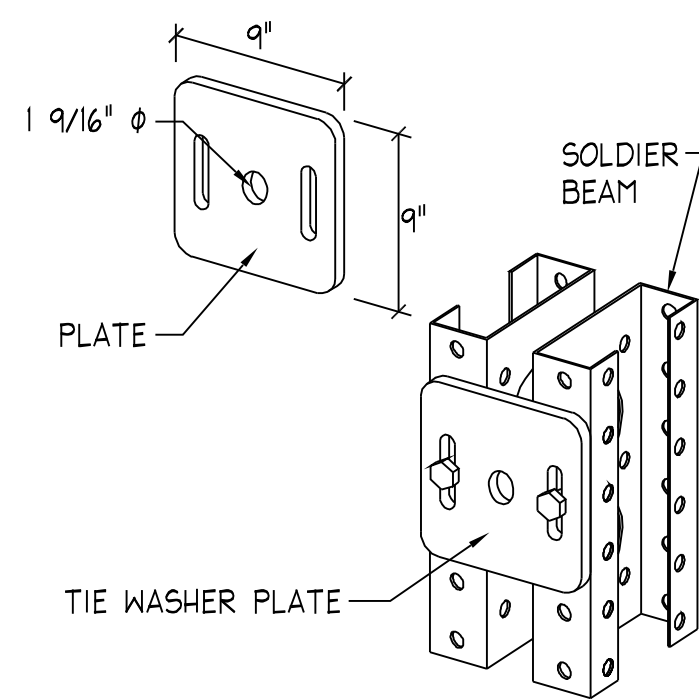
RISER BRACKET APPLICATION



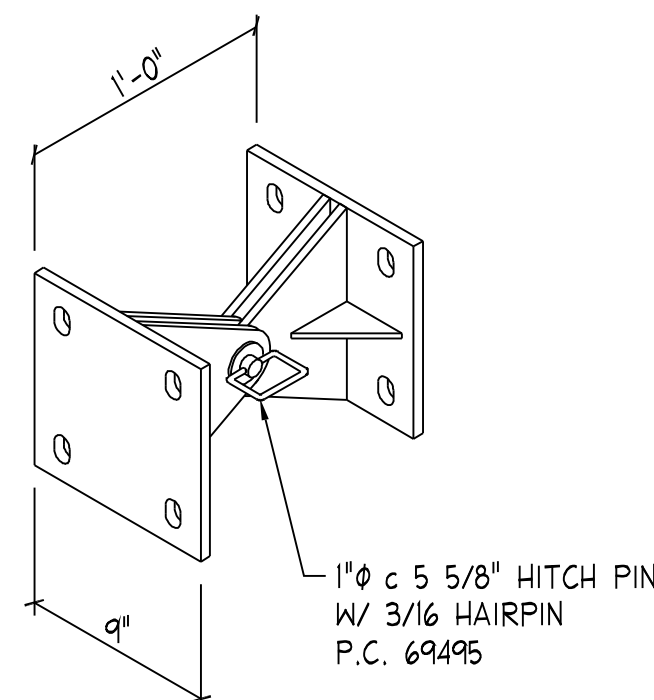
STRUT JACK APPLICATION



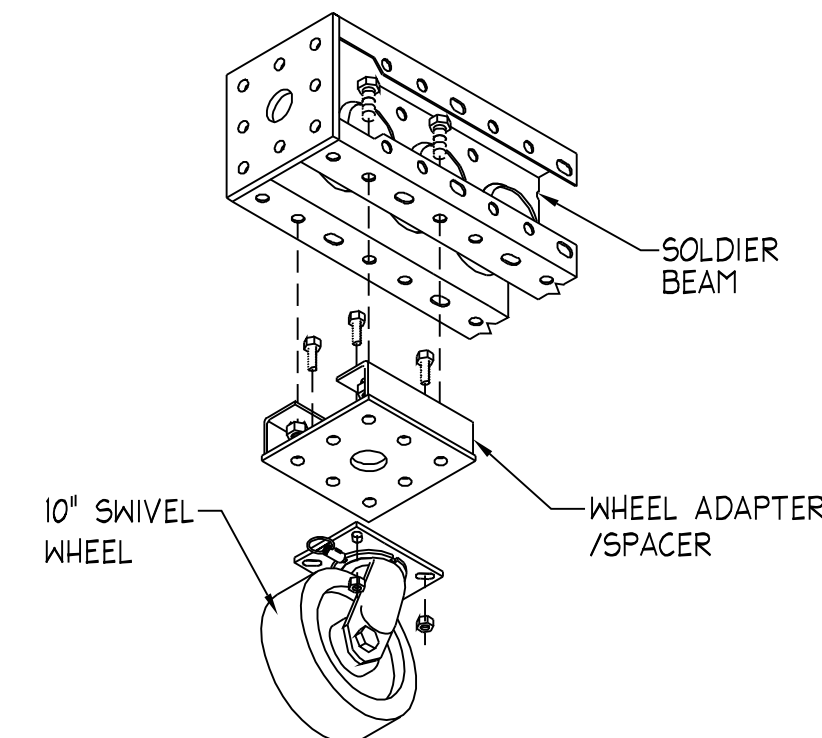
SHORE JACK  
P.C. 38918  
WEIGHT: 36 Lbs.



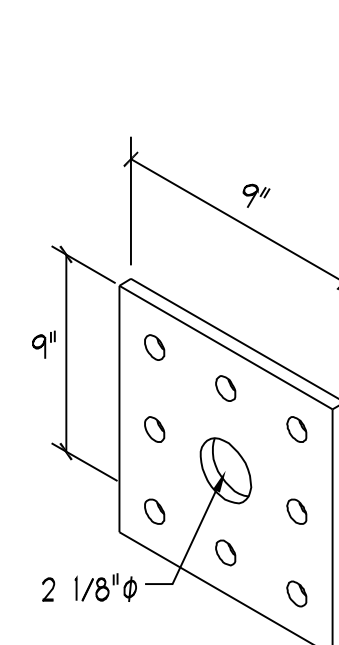
TIE WASHER PLATE  
P.C. 38905  
WEIGHT: 17 Lbs.



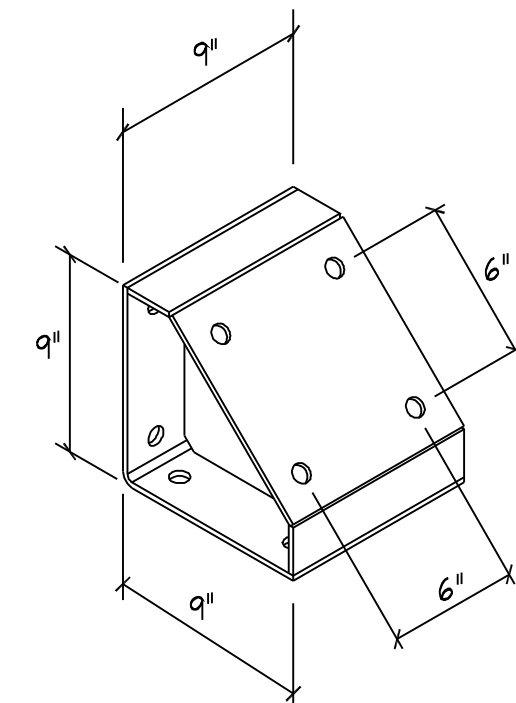
PIVOT BRACKET  
P.C. 38907  
WEIGHT: 37 Lbs.



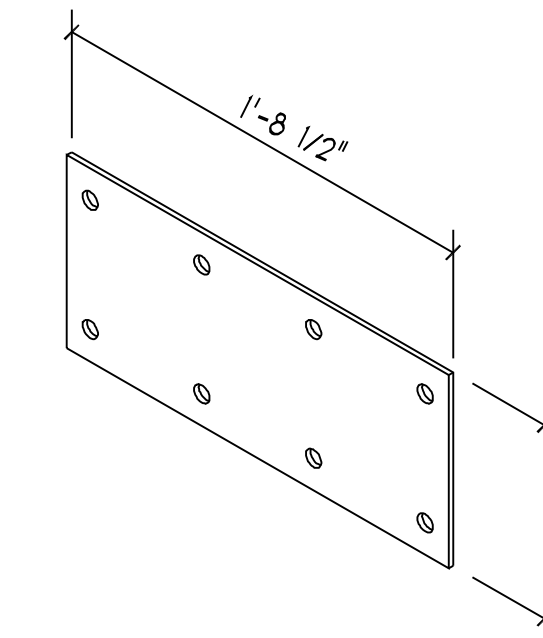
WHEEL ADAPTER/SPACER  
P.C. 38920  
WEIGHT: 19 Lbs.



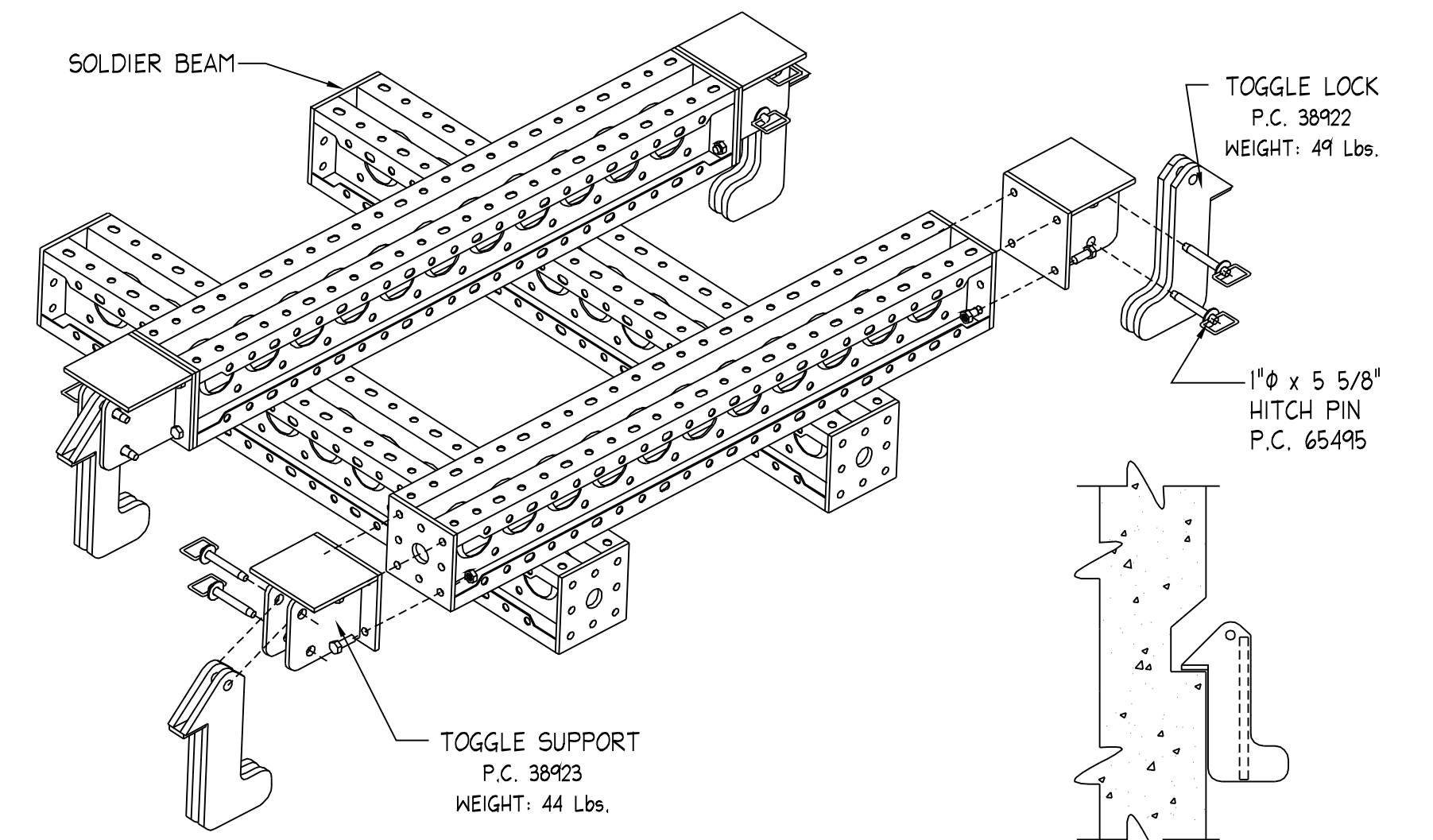
SHIM PLATE  
P.C. 47951  
WEIGHT: 11 Lbs.



45° BRACKET  
P.C. 38919  
WEIGHT: 27 Lbs.

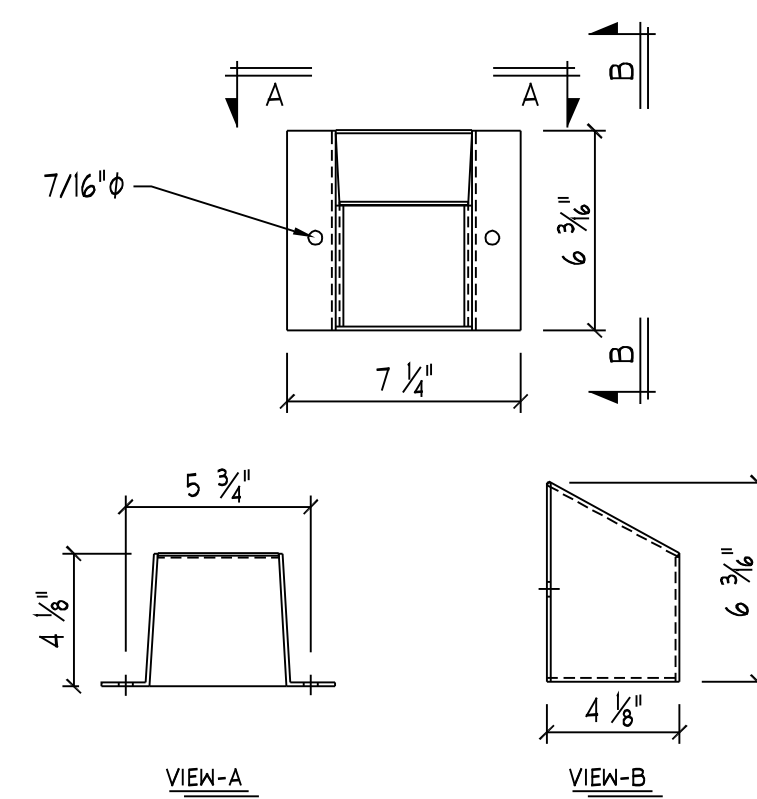


LAP SPLICE PLATE  
P.C. 38926  
WEIGHT: 13 Lbs.

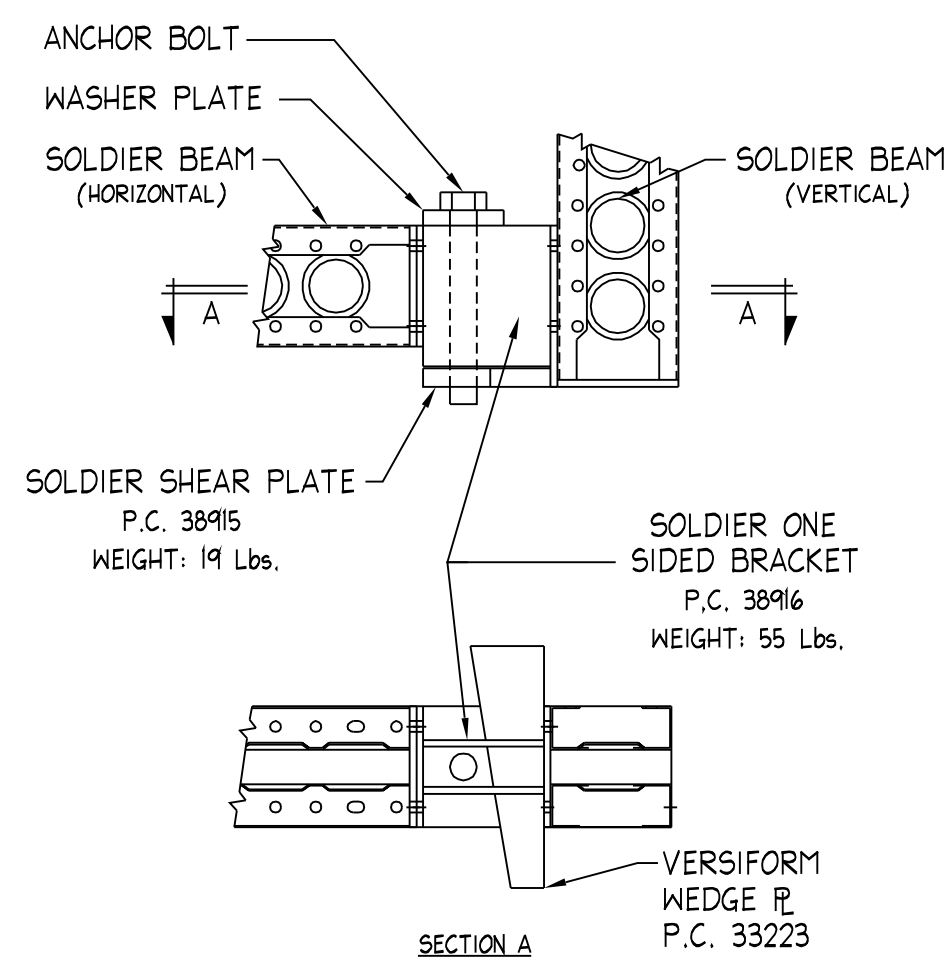


TOGGLE LOCK AND TOGGLE SUPPORT APPLICATION

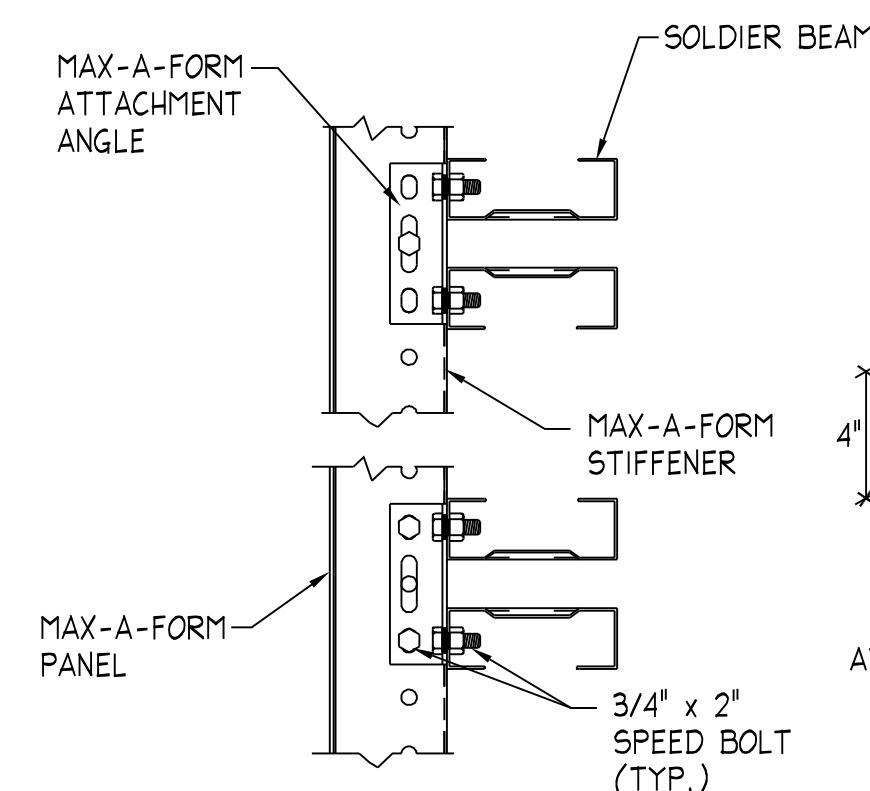
REPRESENTATIVE DETAIL



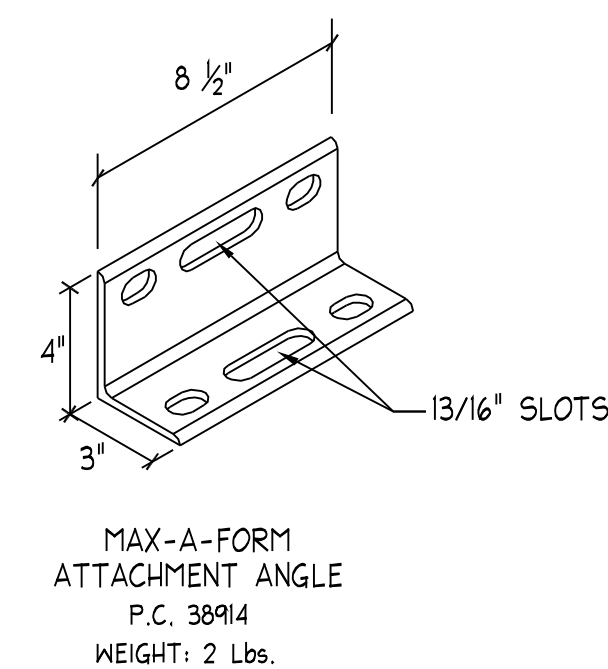
POCKET FORMER  
P.C. 38924  
WEIGHT: 6 Lbs.



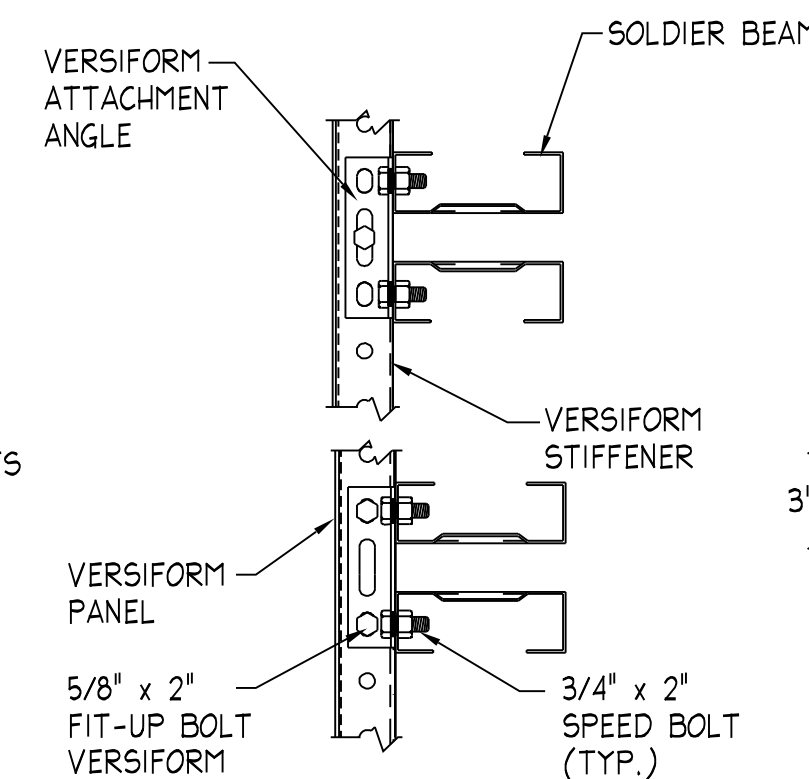
SOLDIER ONE SIDED BRACKET AND SHEAR PLATE APPLICATION



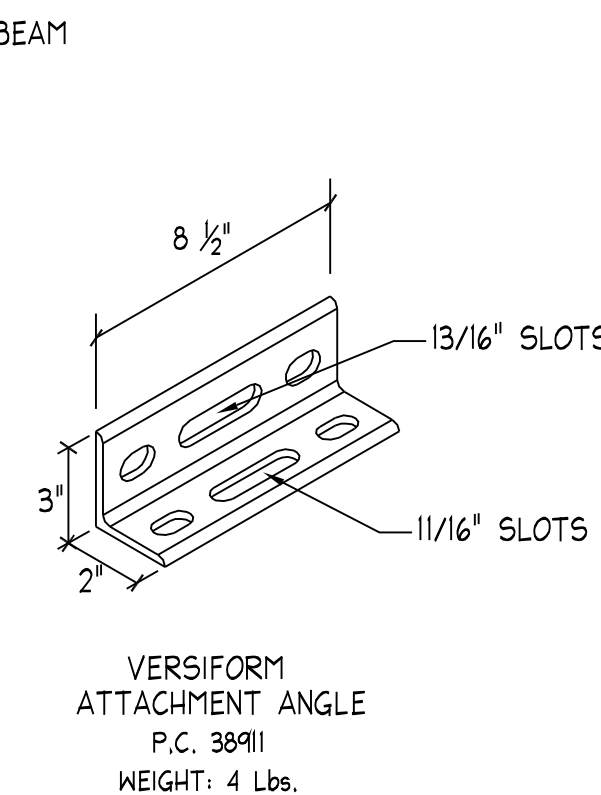
MAX-A-FORM ATTACHMENT ANGLE



MAX-A-FORM ATTACHMENT ANGLE  
P.C. 38914  
WEIGHT: 2 Lbs.

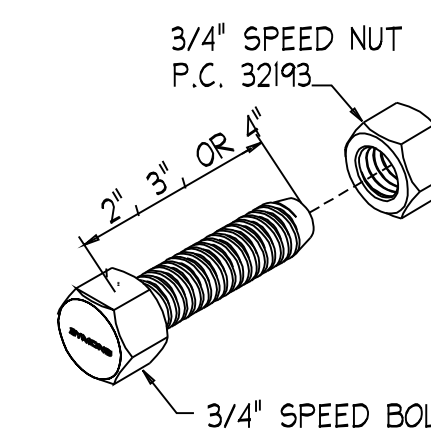


VERSIFORM ATTACHMENT ANGLE



VERSIFORM ATTACHMENT ANGLE  
P.C. 38911  
WEIGHT: 4 Lbs.

PRODUCT CODE	WEIGHT	DESCRIPTION
32191	0.50	3/4" X 2" LONG SPEED BOLT
32195	0.58	3/4" X 3" LONG SPEED BOLT
32194	0.65	3/4" X 4" LONG SPEED BOLT
32193	0.25	3/4" SPEED NUT



3/4" SPEED NUT  
P.C. 32193

## TYPICAL TOOLS

- 1-1/2" SPUD WRENCH W/DRIFT HANDLE - FOR 3/4" SPEED BOLTS
- 1-1/2" DEEP SOCKETS (6 OR 12 PT X 1/2" DR. MIN.) - 3/4" SPEED BOLTS
- 1-3/8" DEEP SOCKET (6 OR 12 PT X 1/2" DR. MIN.) - FOR 1" GIRDER BOLTS
- RATCHET - 1/2" DRIVE MINIMUM
- 12" SOCKET EXTENSION - (1/2" DR. MIN.)
- 2-3/8" OPEN END WRENCH - FOR 1-1/2" SCREW JACKS AND 1-1/2" THRU BOLTS
- 3-3/8" OPEN END WRENCH - FOR 2" SCREW JACKS AND 2" THRU BOLTS
- 18" ADJUSTABLE WRENCH

THE ABOVE REPRESENTS MINIMUM TOOLS REQUIRED FOR ASSEMBLY, OTHER HAND AND POWER TOOLS COMMON TO CONSTRUCTION ARE NORMALLY NECESSARY.

**FORMTECH**  
concrete forms, inc.

48575 Downing Street  
Wixom, MI 48393  
800.876.4857 | info@formtechinc.com  
formtechinc.com

© 2005 Symons  
Printed in U.S.A.  
Product Code No. 91162

Give us a call at any of our branch locations, email us at [info@formtechinc.com](mailto:info@formtechinc.com), or click on [formtechinc.com/quote](http://formtechinc.com/quote) to get a quote. Our experienced Form Tech representatives will answer your questions, and help you get your project started with some of the best concrete forming, shoring, and accessory products in the industry, backed by a professional and detail-oriented staff.

---



### Charleston, SC

7377 Peppermill Lane  
North Charleston,  
SC 29418  
843.628.3434



### Detroit, MI

Corporate Headquarters  
975 Ladd Road  
Walled Lake,  
MI 48390  
Branch: 248.344.8260  
Corporate: 248.344.8265

---



### Charleston, WV

161 Industrial Road  
St. Albans,  
WV 25177  
304.722.6804



### Pittsburgh, PA

2850-A Kramer Road  
Gibsonia,  
PA 15044  
412.331.4500

---



### Charlotte, NC

1000 Thomasboro Road  
Charlotte,  
NC 28208  
704.395.9910



### Raleigh, NC

115 Peffinder Lane  
Raleigh,  
NC 27603  
919.833.0911

---



### Cleveland, OH

20801 Miles Road  
North Randall,  
OH 44128  
216.692.0497



TRUSTED FORMWORK & ACCESSORY SPECIALISTS

800-876-4857 | [info@formtechinc.com](mailto:info@formtechinc.com) | [formtechinc.com](http://formtechinc.com)