



## A flexible forming system designed for round concrete tanks and curved walls.

### All-steel design

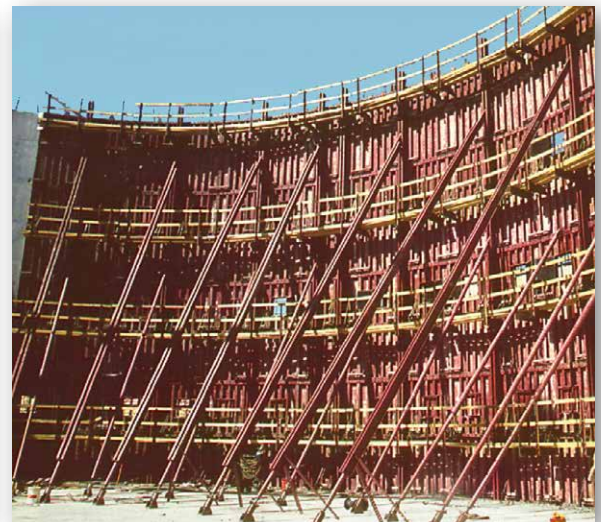
The all-steel Flex-Form system gives you all the strength and versatility of integral 4" deep vertical stiffeners with  $\frac{3}{16}$ " steel skin plate in a rated 1000 psf system. Panels are available in 2', 3', 4', 5' and 6' widths, and 4', 8' and 12' lengths. The large number of sizes allows more forming flexibility. The right combination of panels mean fewer pieces, fewer panel joints and less labor to assemble.

### Pre-rolled ribs

Pre-rolled, factory-installed top and bottom steel ribs bolt to flexible panel sections to shape and hold the form to the radius. Panels always conform to the radius of the ribs — this design assures that you will get the correct radius every time. By installing a straight rib, you can even produce a straight form and wall when needed. Panels are shipped to the jobsite with factory-installed ribs so forming operations can begin almost immediately.

### Excellent finish

Because the steel skin plate flexes to form the desired arc, there's no "chording" appearance in the poured concrete surface. Conventional panel systems produce form joint marks that require grinding and rubbing, while the Flex-Form system produces smooth concrete surfaces that require practically no finishing.



Give us a call at any of our branch locations, email us at [info@formtechinc.com](mailto:info@formtechinc.com), or click on [formtechinc.com/quote](http://formtechinc.com/quote) to get a quote. Our experienced Form Tech representatives will answer your questions, and help you get your project started with some of the best concrete forming, shoring, and accessory products in the industry, backed by a professional and detail-oriented staff.

---



### Charleston, SC

7377 Peppermill Lane  
North Charleston,  
SC 29418  
843.628.3434



### Detroit, MI

Corporate Headquarters  
975 Ladd Road  
Walled Lake,  
MI 48390  
Branch: 248.344.8260  
Corporate: 248.344.8265

---



### Charleston, WV

161 Industrial Road  
St. Albans,  
WV 25177  
304.722.6804



### Pittsburgh, PA

2850-A Kramer Road  
Gibsonia,  
PA 15044  
412.331.4500

---



### Charlotte, NC

1000 Thomasboro Road  
Charlotte,  
NC 28208  
704.395.9910



### Raleigh, NC

115 Peffinder Lane  
Raleigh,  
NC 27603  
919.833.0911

---



### Cleveland, OH

20801 Miles Road  
North Randall,  
OH 44128  
216.692.0497



TRUSTED FORMWORK & ACCESSORY SPECIALISTS

800-876-4857 | [info@formtechinc.com](mailto:info@formtechinc.com) | [formtechinc.com](http://formtechinc.com)