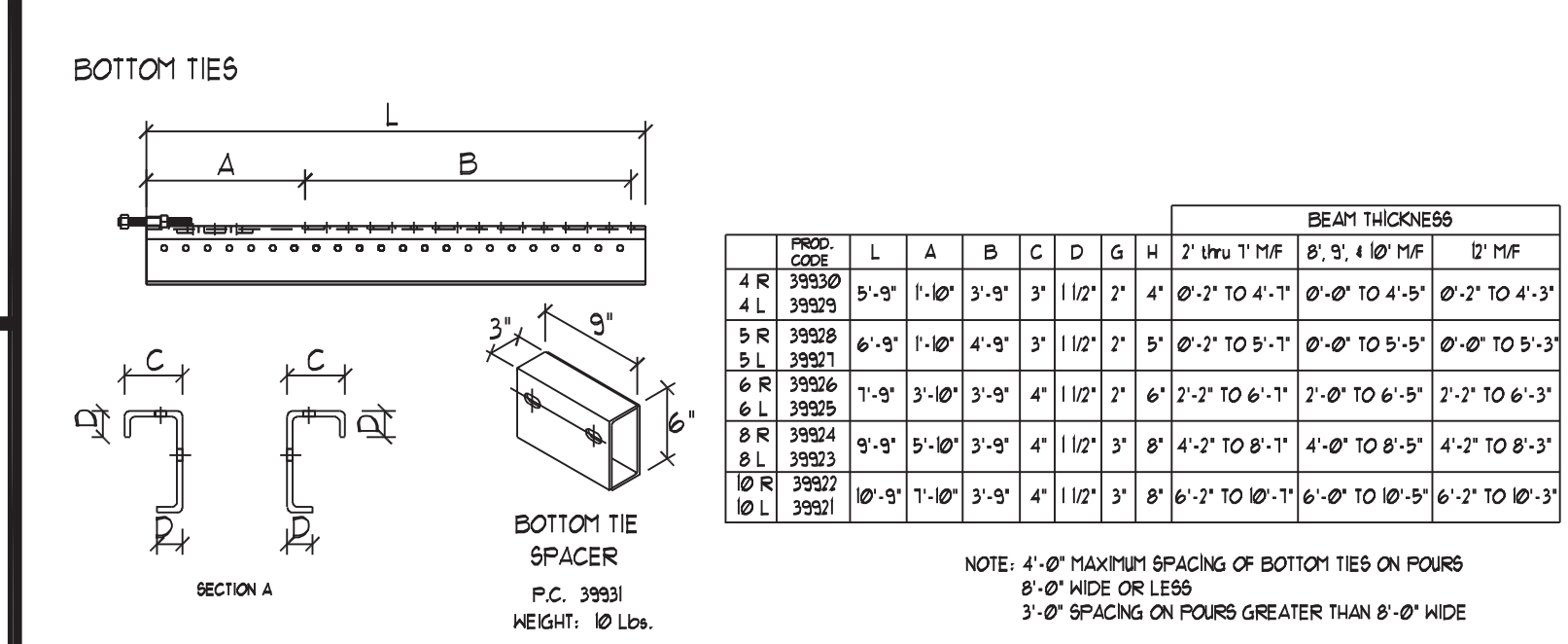
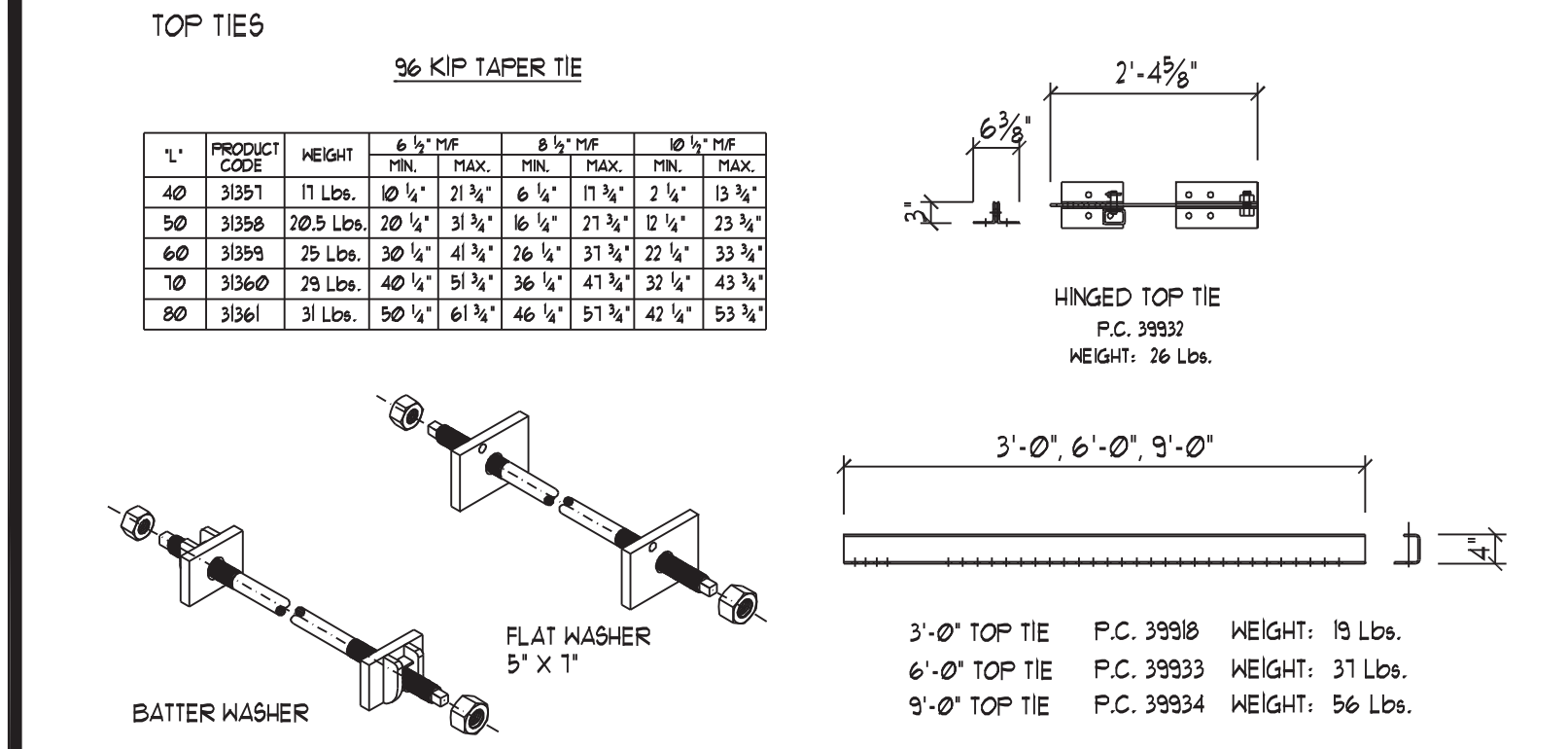
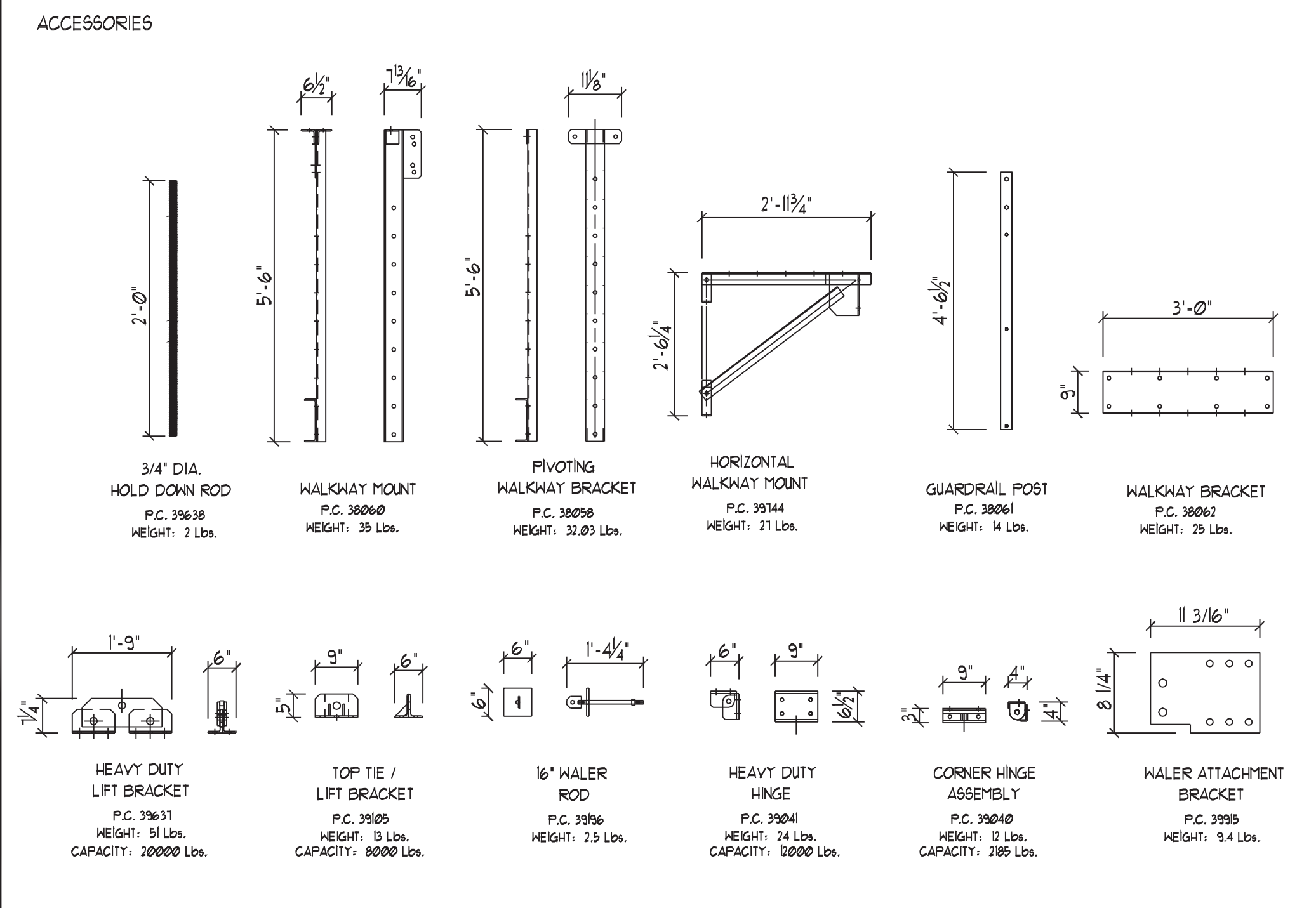
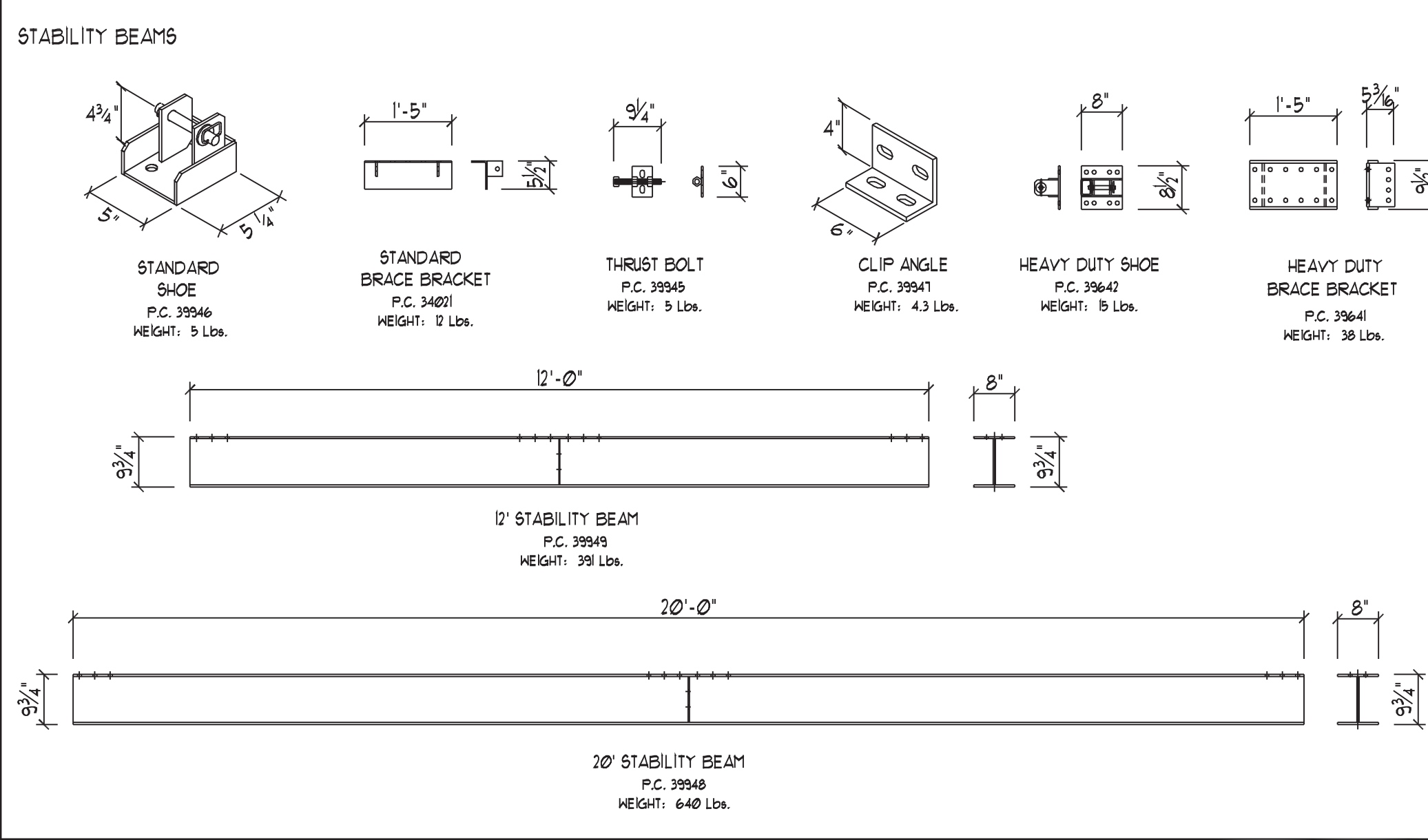
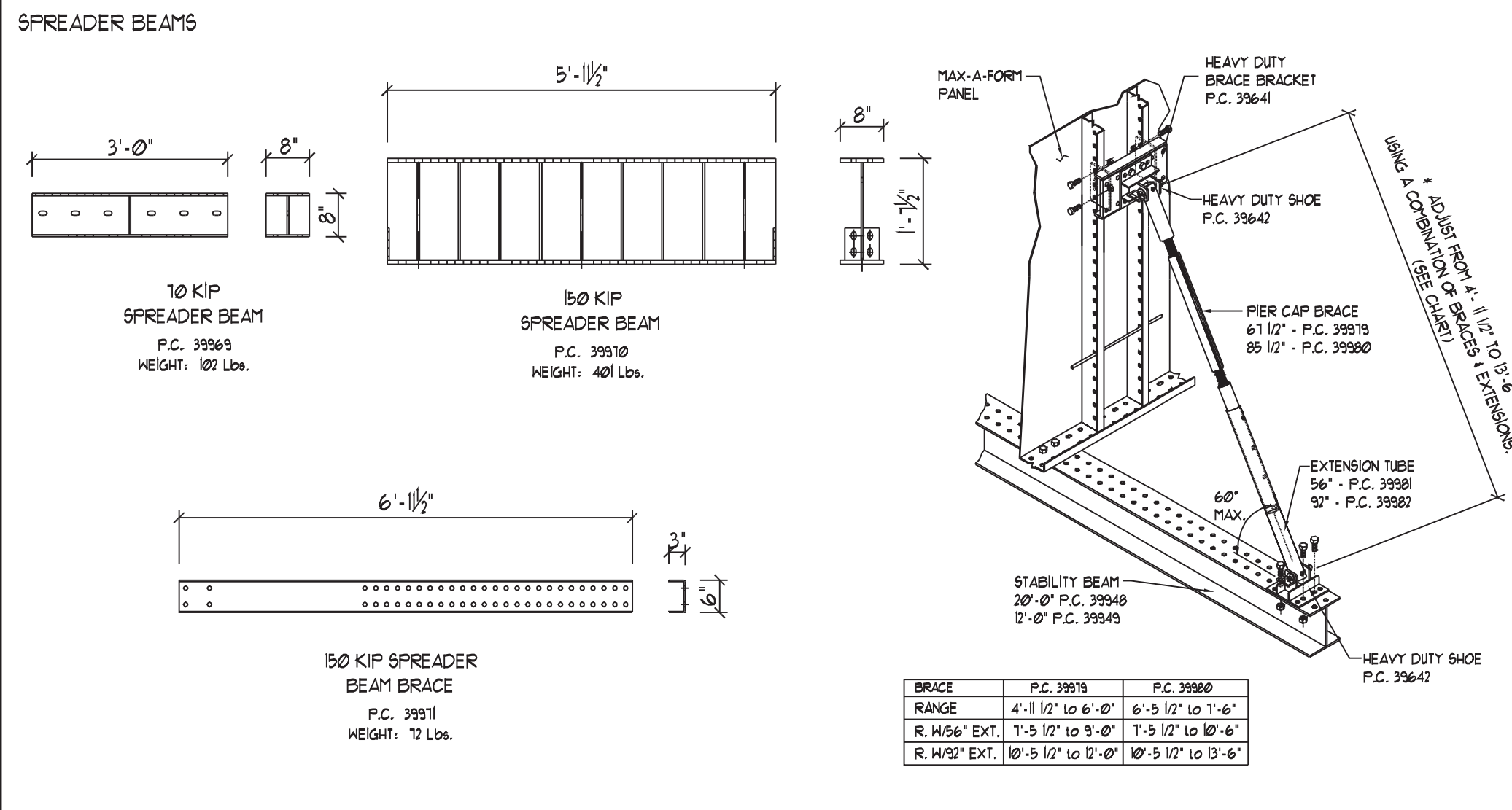
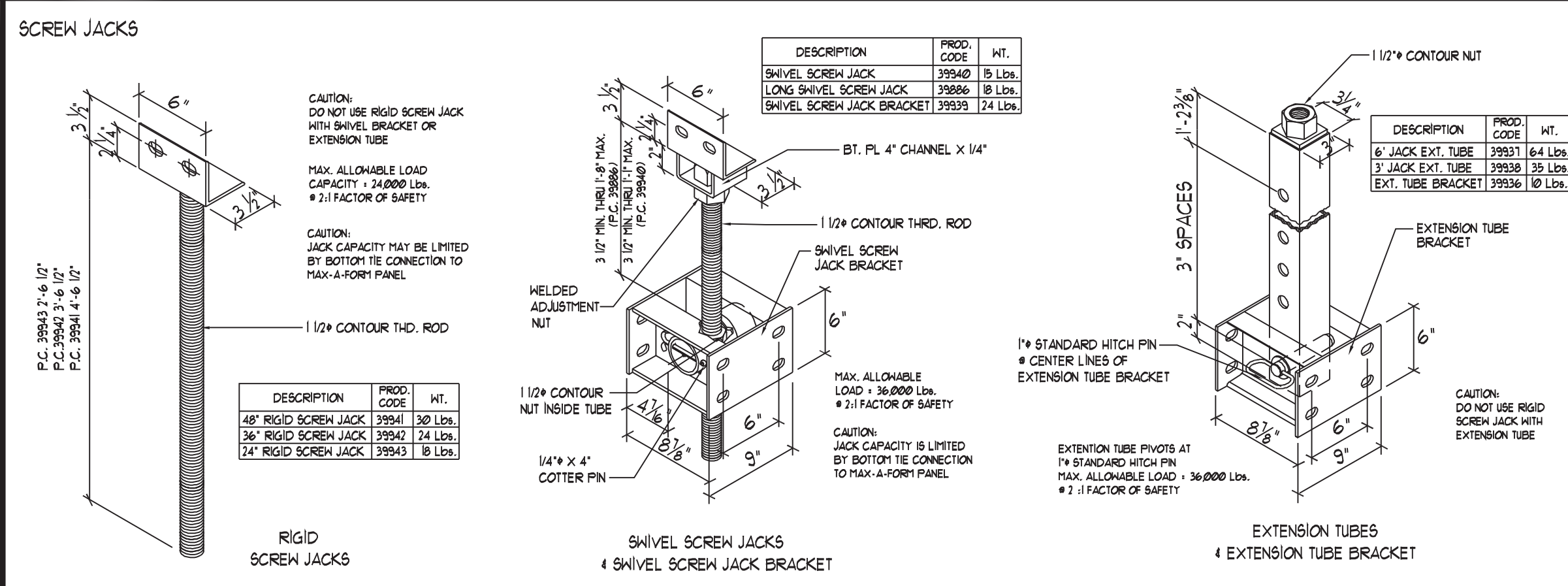
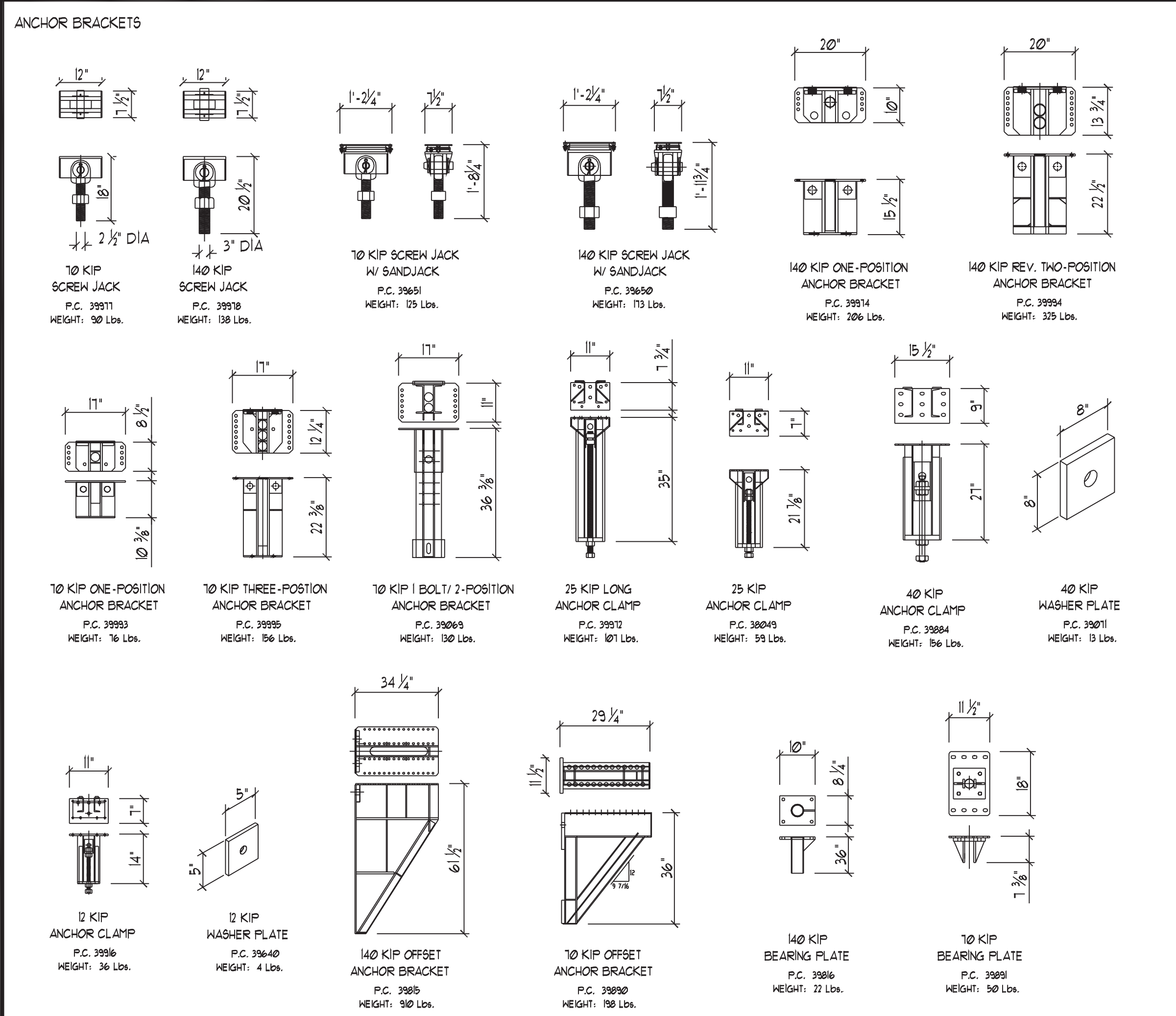
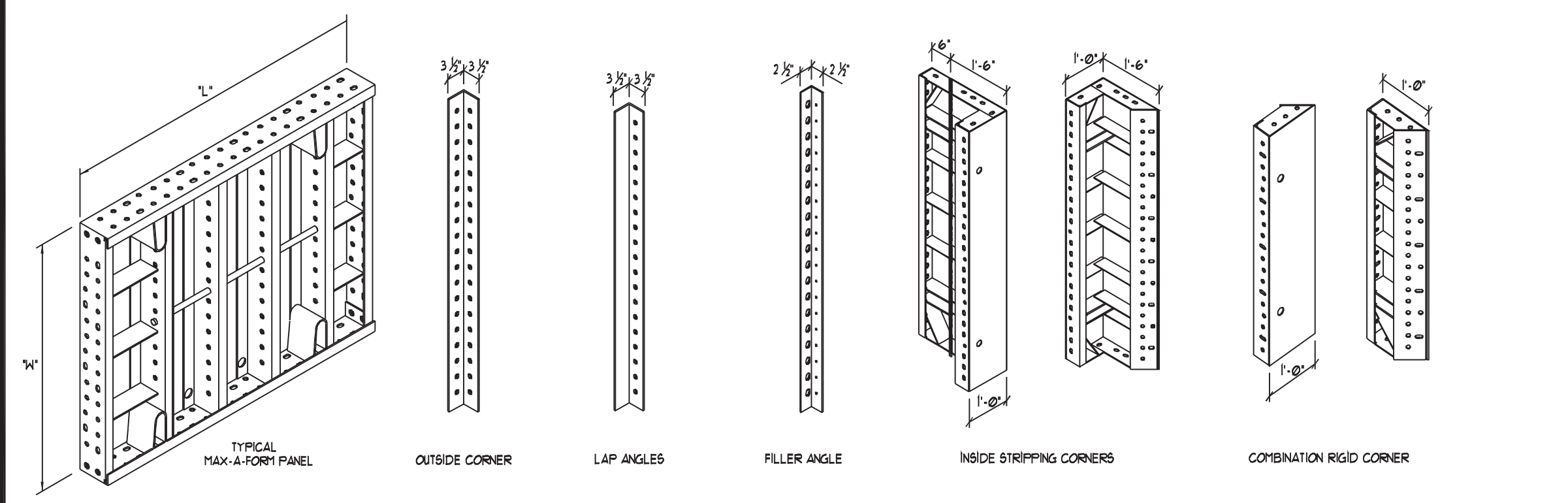


# SYMONS MAX-A-FORM<sup>®</sup> IDENTIFICATION CHART

This chart will assist in order preparation and in the preparation of return equipment lists for all Max-A-Form System components and associated components. When placing an order either by mail or by phone, please identify each component by its correct name and product code number. Should you have any questions about availability of a special product, please contact your Symons Account Manager or Symons Distribution Center.



**IMBEDS**

IMBED	USE WITH	LENGTH (FEET)	PRODUCT CODE	WEIGHT (LBS)
75 KIP (SINGLE TUBE)	SINGLE 1 1/2" THRU BOLT	1	39875	3
		2	39876	5
		3	39877	7
		4	39878	9
		5	39879	11
		6	39830	13
		7	39831	15
		8	39832	17
		9	39833	19
40 KIP & 10 KIP (SINGLE TUBE)	SINGLE 7/8" THRU BOLT	2	39881	4
		3	39882	6
		4	39883	8
		5	39885	10
		6	39886	12
		7	39891	14
		8	39896	16
		9	39899	18
		10	39835	20
10 KIP (DOUBLE TUBE)	DOUBLE 1 1/2" THRU BOLTS	1	39834	10
		2	39835	14
		3	39836	18
		4	39837	22
		5	39838	26
		6	39839	30
		7	39840	34
		8	39841	38
		9	39842	42
140 KIP (DOUBLE TUBE)	DOUBLE 7/8" THRU BOLTS	1	39843	15
		2	39844	21
		3	39845	27
		4	39846	33
		5	39847	39
		6	39848	45
		7	39849	51
		8	39850	57
		9	39851	63

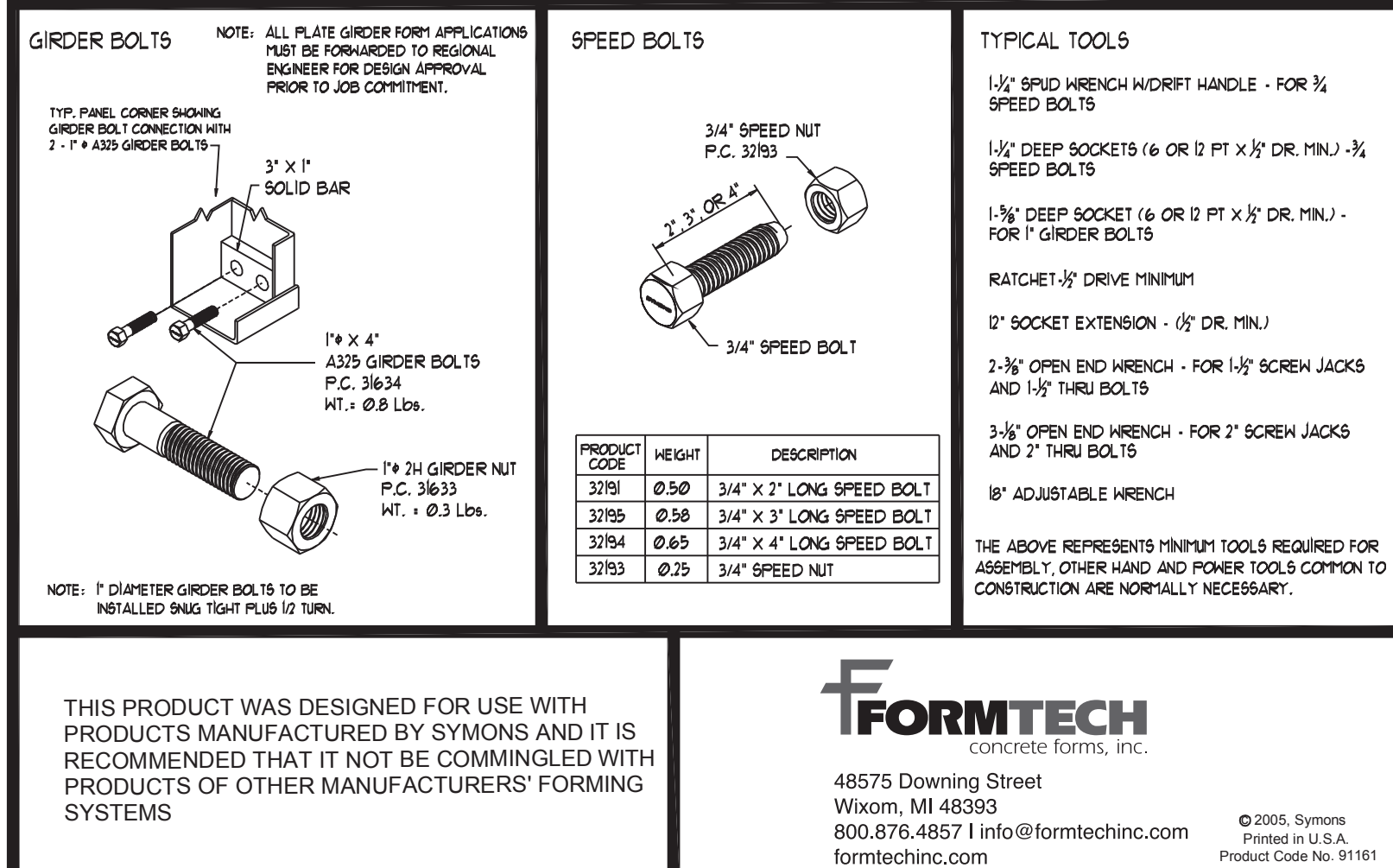
**THRU BOLTS W/NUTS**

BOLT DIA.	USE WITH	LENGTH (FEET)	PRODUCT CODE	WEIGHT (LBS)
1 1/2"	10 KIP ONE-POSITION BRACKET	2'-6"	39852	18
		3'-6"	39853	24
		4'-6"	39854	30
		5'-6"	39855	36
		6'-6"	39856	42
		7'-6"	39857	48
2"	140 KIP ONE-POSITION BRACKET	2'-6"	39861	39
		3'-6"	39862	45
		4'-6"	39863	51
		5'-6"	39864	57
		6'-6"	39865	63
		7'-6"	39866	69

**TYPICAL TOOLS**

- 1 1/2" SPUD WRENCH W/HANDLE - FOR 3/4" SPEED BOLTS
- 1 1/2" DEEP SOCKETS (6 OR 12 PT X 3/8" DR. MIN.) - 3/4" SPEED BOLTS
- 1 1/2" DEEP SOCKET (6 OR 12 PT X 3/8" DR. MIN.) - FOR 1" GIRDER BOLTS
- RATCHET-1/2" DRIVE MINIMUM
- 1" SOCKET EXTENSION - 1/2" DR. MIN.
- 2-3/8" OPEN END WRENCH - FOR 1 1/2" SCREW JACKS AND 1 1/2" THRU BOLTS
- 3-1/2" OPEN END WRENCH - FOR 2" SCREW JACKS AND 2" THRU BOLTS
- 18" ADJUSTABLE WRENCH

**NOTE:** 1" DIAMETER GIRDER BOLTS TO BE INSTALLED SNUG TIGHT PLUS 1/8" TURN.





Give us a call at any of our branch locations, email us at [info@formtechinc.com](mailto:info@formtechinc.com), or click on [formtechinc.com/quote](http://formtechinc.com/quote) to get a quote. Our experienced Form Tech representatives will answer your questions, and help you get your project started with some of the best concrete forming, shoring, and accessory products in the industry, backed by a professional and detail-oriented staff.

---



### Charleston, SC

7377 Peppermill Lane  
North Charleston,  
SC 29418  
843.628.3434



### Detroit, MI

Corporate Headquarters  
975 Ladd Road  
Walled Lake,  
MI 48390  
Branch: 248.344.8260  
Corporate: 248.344.8265

---



### Charleston, WV

161 Industrial Road  
St. Albans,  
WV 25177  
304.722.6804



### Pittsburgh, PA

2850-A Kramer Road  
Gibsonia,  
PA 15044  
412.331.4500

---



### Charlotte, NC

1000 Thomasboro Road  
Charlotte,  
NC 28208  
704.395.9910



### Raleigh, NC

115 Peffinder Lane  
Raleigh,  
NC 27603  
919.833.0911

---



### Cleveland, OH

20801 Miles Road  
North Randall,  
OH 44128  
216.692.0497



TRUSTED FORMWORK & ACCESSORY SPECIALISTS

800-876-4857 | [info@formtechinc.com](mailto:info@formtechinc.com) | [formtechinc.com](http://formtechinc.com)