



**PERFORM  
WITH  
PRECISION™**

**MAX-A-FORM  
STEEL FORMING SYSTEM**

**CONCRETE  
CONSTRUCTION  
SOLUTIONS**

**F FORMTECH**  
concrete forms, inc.

 **SYMONS®**  
By Dayton Superior



The Max-A-Form Forming System combines the labor-saving benefits of modular forming with the strength of an all-steel design. It is ideal for gang forming heavy structural walls and columns where repetition, multiple lifts, or when a smooth finish are required. The structurally welded frame and steel face also can support concrete loads over long spans without the need for shoring equipment.

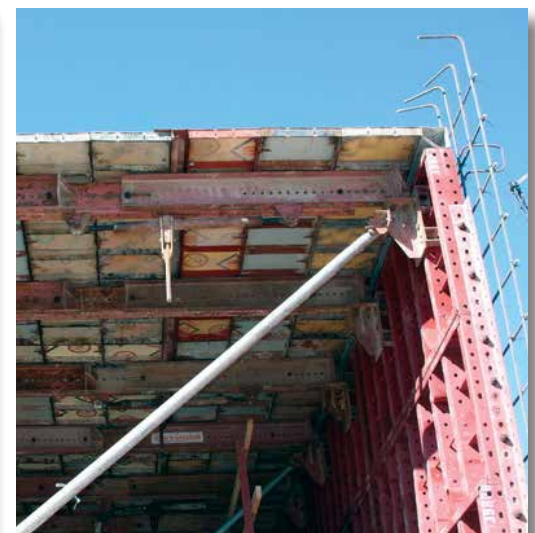
## Panel Design

Max-A-Form panels are constructed with a  $\frac{3}{16}$ " steel face plate and heavy duty crossmembers that support higher pour rates. Panels up to 8' wide by 20' long are rated at 1500 psf; 9' and 10' wide panels are rated at 1200 psf and 12' wide panels are rated at 1000 psf. The rigidity of these panels virtually eliminates the need for waler or strongback requirements and reduces the number of ties required.



## System Compatibility

Whether used alone or integrated with other Symons forming systems, Max-A-Form is engineered to minimize labor and material costs associated with concrete forming.



## Productivity

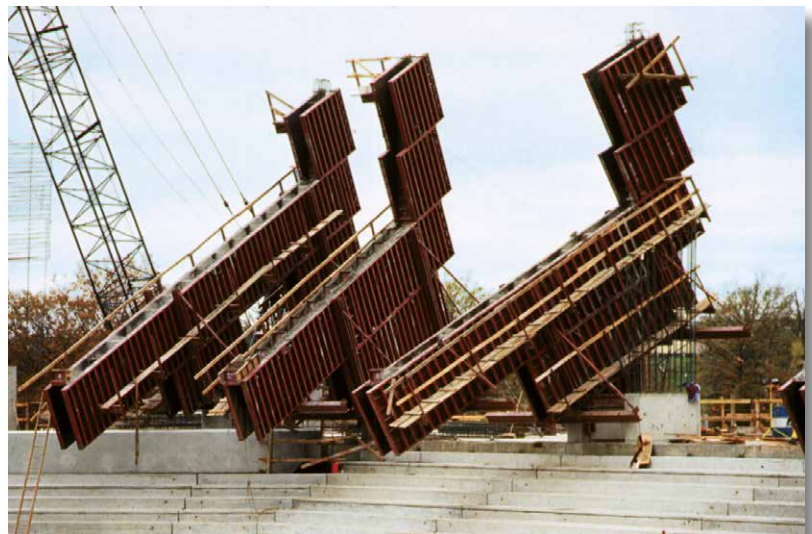
When assembled in larger gangs, Max-A-Form becomes even more productive. Cycling time is optimized on repetitious forming applications, and the modular design allows quick modifications to meet changing wall forming requirements. With large gangs and easy-to-use support equipment like the Max-A-Form Anchor Clamps, crane time is kept to a minimum.

Productivity is further enhanced during setting and stripping, because crane time is reduced. Cap forms can be picked as a single unit or in large assemblies.

## Self-Spanning

The Max-A-Form  $\frac{3}{16}$ " steel face and integrated structural steel frame provide support over long spans with no need for labor intensive shoring. This is especially useful for beam and pier cap applications where shoring support is impossible.

Stability Beams and Pier Cap Braces, Spreader Beams, Top Tie/Lift Brackets, Bottom Ties with Swivel Screw Jacks, Walkway Brackets and other accessories are available for self-spanning applications.





Details are handled easily with Max-A-Form corner accessories and products to provide transition to other Symons forming systems.

## Columns and Piers

Columns can be gangformed, using Max-A-Form Hinges that allow the entire form to be stripped in one piece. Columns as large as 12' square can be formed without ties.

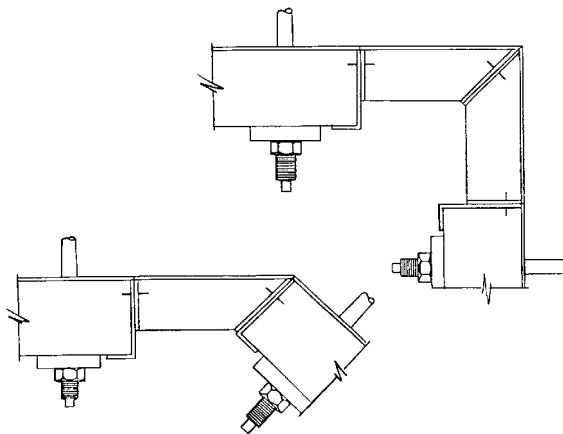
## Corner Options

Double-Duty, Combination Rigid Corner halves bolt up to produce straight, 90 degree corners that are easy to strip or provide a 45 degree filler when used as a single form.

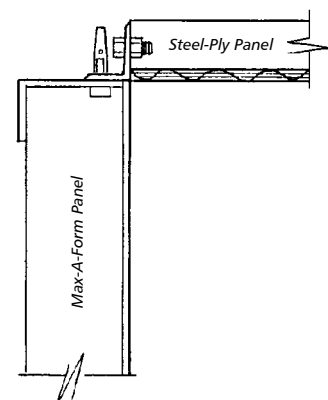
Inside Stripping Corners allow easy stripping of gangs adjacent to corners or pilasters.

## System Transitions

Transitions to Steel-Ply<sup>®</sup> and Flex-Form<sup>®</sup> are accomplished directly through the punched holes provided in the side and end rails. Transition to Versiform<sup>®</sup> is accomplished with a Flex-Form filler or at an outside corner using a Steel-Ply Transition Outside Corner.



Combination Rigid Corner adapts to common angles



Gauge line provides easy transition from one system to another

## Simple Wall Forming

Forms are assembled easily using a 3/4" Speed Bolt and Nut. Panels are punched with a combination of holes and slots in both the top and the side framing to allow easy alignment and quick assembly regardless of forming panel orientation.

Panels are available in more than 100 sizes, from 2' wide by 1' long to 10' wide by 20' long. The 12' wide panels are furnished in a maximum of 8' lengths. The large number of filler choices allows more gang and detail flexibility. Large, 200 square foot panels mean fewer pieces, fewer panel joints and less labor to assemble.

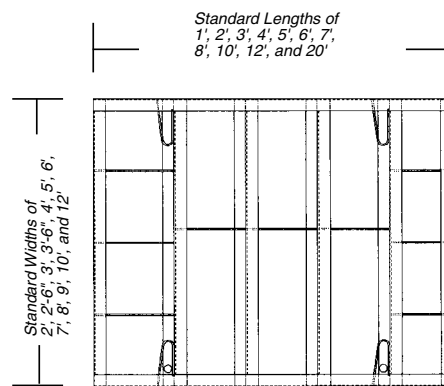


## Tie Systems

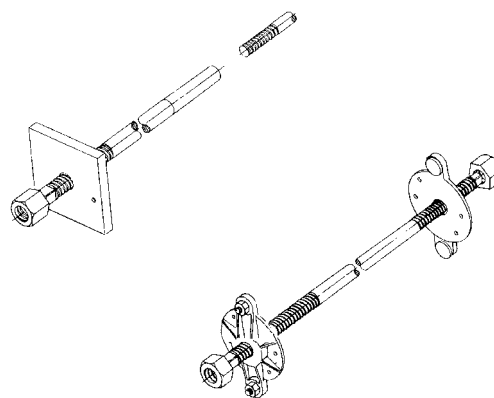
Versatile form tie systems are available with capacities and configurations to maximize cost effectiveness for almost any concrete forming application.

Taper Ties and She-Bolts are used with Plate Washers or Cast Bearing Washers and nuts for efficient flat and battered wall applications. Ultimate loads on Taper Ties are 50,000 lbs. or 96,000 lbs. and She-Bolts are 50,000 lbs. or 85,000 lbs.

External top and bottom concrete form ties are available in several lengths and adjustment ranges to accommodate a



Complete range of sizes



She-Bolt with Plate Washer and Taper Tie with Cast Bearing Washer



## Friction Collars

Max-A-Form Friction Collars provide high capacity, anchorless support without the high cost and labor needed to place or finish imbedded anchors or thru rods. Round Friction Collars support 96 Kips for columns up to 36" in diameter; a little less for larger diameters. Adjustable Rectangular Friction Collars support 20 Kips on columns 12" to 24" on each side.

## Anchor Brackets

Anchor Brackets are available in several configurations to meet specific concrete forming requirements.

Anchor Brackets, in 70 and 140 Kip capacities, provide heavy duty capability for concentrated plate-girder loading applications. High capacity screw jacks allow height adjustments. Multiple-hole positioning provides support for over-hanging pier caps.



## Column and Bullnose Forming

All-steel, Circular Column Forms are rated at 3,000 psf to allow maximum pour rates. Max-A-Form circular columns also include ladder mounts and lifting lugs.

The Max-A-Form forming system allows fast bullnose forming when equipped with half-sections of Circular Column Forms.



## HDO Plywood Face Option

Max-A-Ply is the Max-A-Form forming system equipped with a special high density overlay with a urethane edge sealed plywood face, instead of a steel face. The plywood face simplifies handling of architectural effects, wall penetrations and embedments.

Although the Max-A-Ply forming system cannot be used for self-spanning applications, it can be integrated with any of the other Symons forming systems. It is an excellent choice whenever forming requirements demand a plywood face.

## Custom Capability

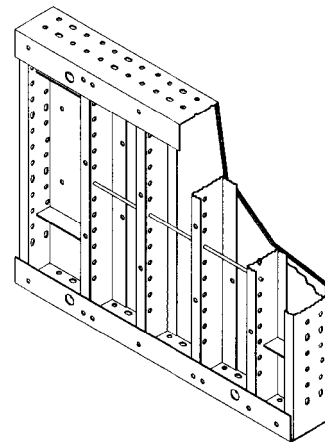
Symons can manufacture custom components to meet almost any design requirement. Contact your Symons representative for more information.

## Architectural Finishes

Chamfers, Form Liners, and Rustication Strips can be attached to the form face to provide unique architectural details.

The all-steel form face provides an excellent finish, reducing finishing requirements.

For more information on Symons forming systems: [www.daytonsuperior.com/forming](http://www.daytonsuperior.com/forming) or call 800-800-7966.



Max-A-Ply Panels provide an option for plywood face



**PERFORM  
WITH  
PRECISION**™

**F**  
**FORMTECH**  
concrete forms, inc

48575 Downing Street  
Wixom, MI 48393  
800.876.4857 | info@formtechinc.com  
formtechinc.com

SYM112  
06/16

Copyright © 2016 Dayton Superior Corporation, All Rights Reserved.



Give us a call at any of our branch locations, email us at [info@formtechinc.com](mailto:info@formtechinc.com), or click on [formtechinc.com/quote](http://formtechinc.com/quote) to get a quote. Our experienced Form Tech representatives will answer your questions, and help you get your project started with some of the best concrete forming, shoring, and accessory products in the industry, backed by a professional and detail-oriented staff.

---



### Charleston, SC

7377 Peppermill Lane  
North Charleston,  
SC 29418  
843.628.3434



### Detroit, MI

Corporate Headquarters  
975 Ladd Road  
Walled Lake,  
MI 48390  
Branch: 248.344.8260  
Corporate: 248.344.8265

---



### Charleston, WV

161 Industrial Road  
St. Albans,  
WV 25177  
304.722.6804



### Pittsburgh, PA

2850-A Kramer Road  
Gibsonia,  
PA 15044  
412.331.4500

---



### Charlotte, NC

1000 Thomasboro Road  
Charlotte,  
NC 28208  
704.395.9910



### Raleigh, NC

115 Peffinder Lane  
Raleigh,  
NC 27603  
919.833.0911

---



### Cleveland, OH

20801 Miles Road  
North Randall,  
OH 44128  
216.692.0497



TRUSTED FORMWORK & ACCESSORY SPECIALISTS

800-876-4857 | [info@formtechinc.com](mailto:info@formtechinc.com) | [formtechinc.com](http://formtechinc.com)